



**morton.**

**Milsons Point** 507/88 Alfred Street

 2  1

Located in the newly developed 88 Alfred complex offering a cosmopolitan lifestyle in the heart of Milsons Point. Ideally situated just a short walk to Kirribilli Village, Milsons Point train station, Milsons Point wharf and ferry, North Sydney Olympic Pool, Luna Park, foreshore parklands and walkways.

- Vast open plan enclosed by floor to ceiling glass
- Expansive Lavender Bay views from living area and balcony
- Large gourmet kitchen with Meile gas appliances
- Timber floors in living areas and carpet in the bedrooms
- Good sized bedrooms with built-in wardrobes
- Ducted air-conditioning throughout the apartment
- Security lift access

**View**

As advertised or by appointment

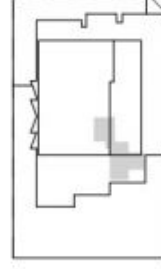
**Agent**

**Sarah Fowell**

 0437 492 129

 sarah@morton.com.au

[morton.com.au](http://morton.com.au)



# 88 ALFRED ST

MILSONS POINT

1 BED + STUDY  
 LEVELS 2, 3, 4, 5, 6, 7, 8, 9, 10, 11  
 APARTMENT 02.08, 03.07, 04.07, 05.07, 06.07, 07.07,  
 08.07, 09.07, 10.07, 11.07

INTERNAL:  
 BALCONY:  
 TOTAL:

59 m<sup>2</sup>  
 5 m<sup>2</sup>  
 64 m<sup>2</sup>

1800 898 818  
 88AlfredSt.com.au



DISCLAIMER - Information and images in this brochure are preliminary and indicative only. Actual development layout, specification and construction may differ. Agreed specifications and our rights to vary those specifications will be set out in your contract for purchase. You should obtain independent professional advice on the contract before you proceed.