



morton.

North Sydney 105/225 Pacific Highway

 2  2  1

Set in the heart of North Sydney with easy access to the CBD and a short stroll to some of Sydney's best cafes, restaurants and bars. Lucent is perfectly placed and offers the best of contemporary apartment living in what is set to be North Sydney's premier address. From its sophisticated and light filled architectural design, to its ultra convenient location and opulent amenities, 'Lucent' offers a luxurious yet relaxed lifestyle opportunity.

- Rooftop gardens and infinity pool with panoramic harbour views
- Cleverly configured interiors maximise space
- Reverse cycle ducted air conditioning
- Stone bench tops, polyurethane cabinetry
- Internal laundry, storage cage and NBN wiring
- Gym, BBQ area and multi-use room

View

As advertised or by appointment

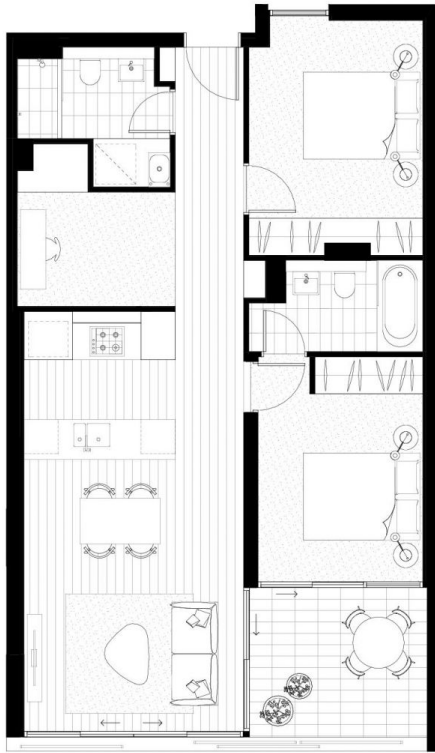
Agent

Sarah Fowell

 0437 492 129

 sarah@morton.com.au

morton.com.au



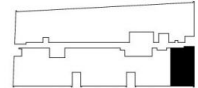
GREENLAND PRESENTS
LUCENT
 NORTH SYDNEY

UNIT NUMBER
 105, 205



**TWO BEDROOM
 APARTMENT**

Internal Area 77m²
 External Area 8m²
 Total Area 85m²



1800 207 778
lucentnorthsydney.com.au



Disclaimer: The particulars are set out as a general outline for the guidance of intending purchasers and do not constitute an offer or contract. All descriptions, dimensions, references to conditions and necessary permissions for use and other details are given in good faith and are believed to be correct, but any intending purchaser should not rely on them as statements or representations of fact, but must satisfy themselves by inspection or otherwise to the correctness of each fact, and where necessary seek advice. No third party supplier or their agents has any authority to make or give any representation or warranty in relation to this property.