



morton.

Mosman 2.05/116 Belmont Road

 1  1  1

Designed by award winning architects Bates Smart with elegant exterior finishes across the articulated five storey façade complement the heritage residences nearby.

Each floor plan has been individually designed to maximise the intrinsic value of its position.

Natural palettes in soft and rich tones are created by the quality choices sourced for this space.

- Well-proportioned living area at the front filled with natural light
- Elegant kitchen with Premium Miele appliances and gas cooking
- Calcutta marble counter tops and splashback
- Superior tapware feature throughout the bathroom
- Wide oak timber floors in living area
- Split system air-conditioning
- Good size balcony with aluminium louvres with glass
- Leafy outlook and acoustic windows
- Secure car space and separate storage


morton.com.au

View

As advertised or by appointment

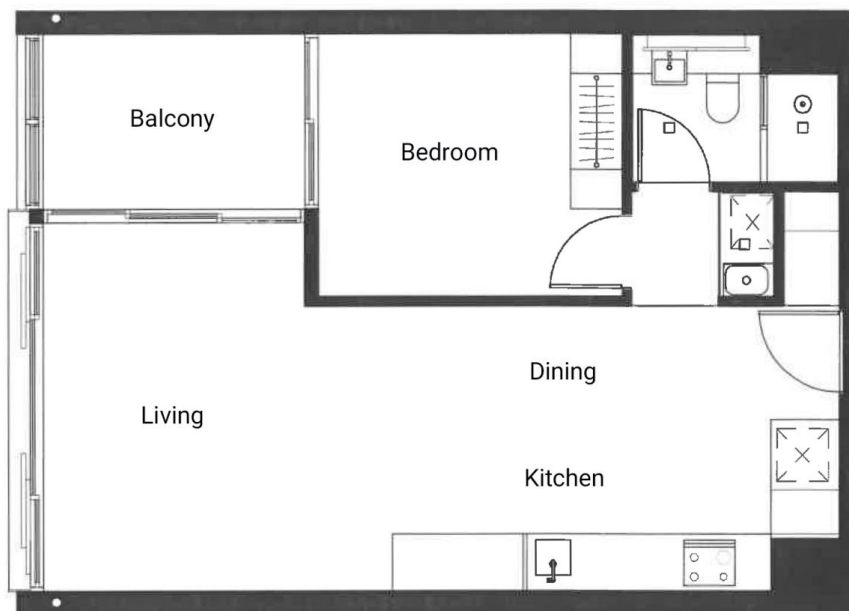
Agent

Patricia Carter

 0456 880 004

 patricia.carter@morton.com.au

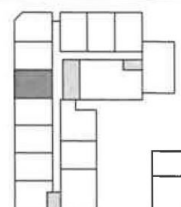
morton.



APARTMENT 2.05
LEVEL Level 02
TYPE 1BT02
UNIT AREA (sqm)
Internal 50 m²
Balcony 6 m²
Total 56 m²
Sheet Number A50.205 Revision [R]

Legend:
S- Storage

0 1 2 3 4m



DISCLAIMER: Please note that the layout plan was produced prior to construction. The information is believed to be correct but is not guaranteed. Changes may be made during construction and dimensions, areas, fittings, finishes and specification are subject to change without notice in accordance with the provisions of the contract for sale. The furniture and furnishings depicted are not included with any sale and purchasers must refer to their contract for sale for the list of inclusions. The position of the furniture and furnishings should not be taken to be indicative of final positions of power points, tv connection points and the like. Prospective purchasers must rely on their own enquiries. All graphics including tile layout and balustrades and the like are indicative only. Bulkheads for services are not depicted.