



# morton.

**St Leonards** 2501/10 Atchison Street

 1  1  1

Space, style and quality finishes will define this near new apartment nestled in a prime position of completed Air St Leonards. This north facing furnished apartment is one of a kind and offering everything you need for inner city living.

- North facing, sunny and bright
- Cleverly configured interiors maximise the space
- Integrated seamless wintergarden
- Oak timber flooring and wool blend carpets
- Full height floor to ceiling glass windows
- Reverse cycle ducted air conditioning
- CaesarStone bench tops and polyurethane cabinetry
- Mirrored splashbacks and European appliances
- Minutes away from St Leonards station
- One carspace
- Furnishings include: fridge, queen size bed, couch, rugs, table & stools, washing machine/dryer, dishwasher & microwave.

### View

As advertised or by appointment

### Agent

**Patricia Carter**

 0456 880 004

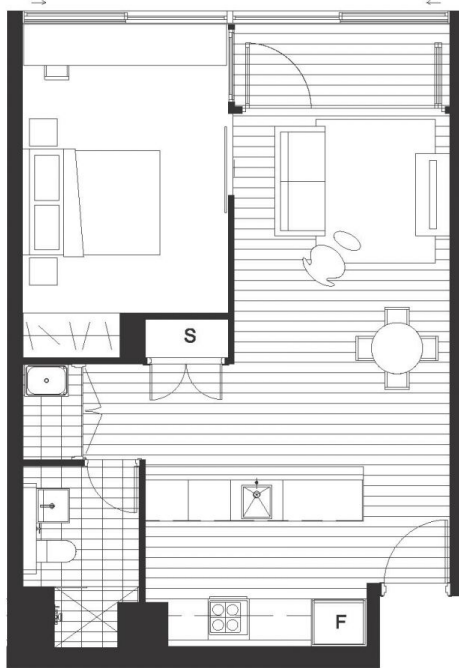
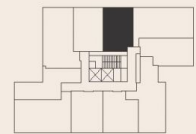
 [patricia.carter@morton.com.au](mailto:patricia.carter@morton.com.au)

[morton.com.au](http://morton.com.au)

## One bed Apartment

301, 501, 601, 701, 801, 901,  
1001, 1101, 1201, 1301, 1501,  
1601, 1701, 1801, 1901, 2001,  
2101, 2201, 2301, 2501, 2601

Internal Area: 54m<sup>2</sup>



1800 806 088

[airstleonards.com.au](http://airstleonards.com.au)

Disclaimer: This layout plan was produced prior to construction and has been prepared for marketing purposes only. The information is believed to be correct but is not guaranteed. Changes may be made during construction and dimensions, areas, fittings and finishes are subject to change in accordance with the contract for sale. The position of furniture and furnishings should not be taken to be indicative of final positions of power points, tv connectors points and the like. Prospective purchaser must rely on their contract for sale for the list of inclusions. Bulkheads for services are not depicted.

**HOLDMARK** / **CBRE**

**AIR**  
APARTMENTS / ST LEONARDS