



**morton.**

**Neutral Bay** 303/19-21 Grosvenor Street

 3  2  2

Spacious interiors, quality design and good natural light are combined to great effect in this Marchese Partners designed Lucca apartment. Set against a leafy district backdrop, it offers a fresh contemporary home that is exceptionally private yet positioned in a location that is all about the attractions of Neutral Bay with cafes, restaurants and wine bars within a short stroll.

- A large open layout with living and dining areas
- Fold-out doors flow out to a sheltered dining terrace
- Designer stone kitchen fitted with Miele gas cooktop
- Three double bedrooms are quietly set to the rear
- Ducted air-con, tandem car space and lock-up storage


**View**

As advertised or by appointment

**Agent**

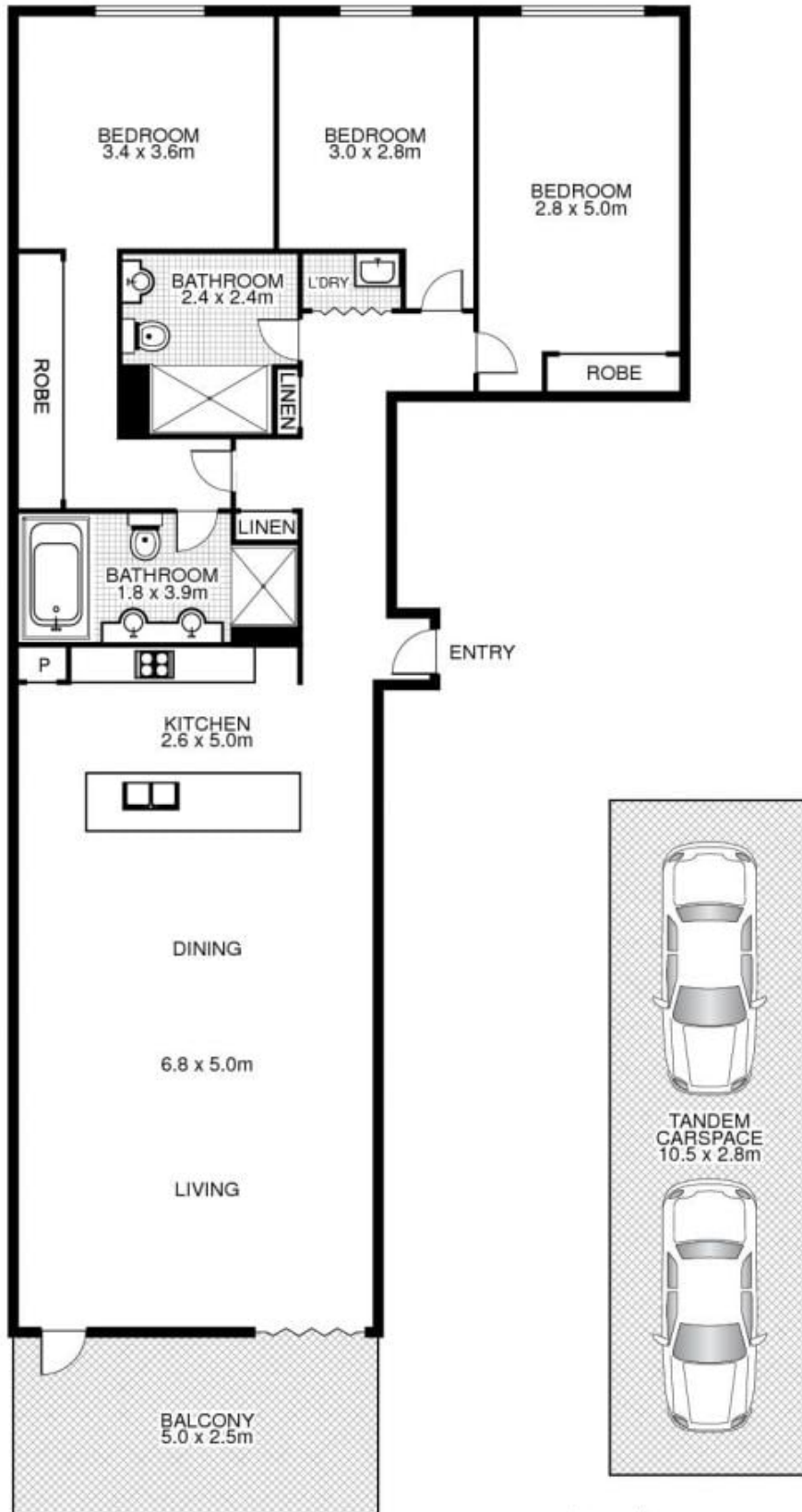
**Patricia Carter**

 0456 880 004

 [patricia.carter@morton.com.au](mailto:patricia.carter@morton.com.au)

[morton.com.au](http://morton.com.au)

# 303/19 Grosvenor Street, NEUTRAL BAY



Plans by  
**surroundpix**  
com.au  
1300 30 32 40

This floor plan is intended as a guide only. Layout dimension are approximate only. No representation or warranties of any nature whatsoever are given or intended. Any person using this information should rely on their own enquiries.