



morton.

Waverton 2/49-51 Bay Road

 3  2  2

Whisper quiet surrounds and positioned away from the road, this newly renovated townhouse combines a relaxed in/outdoor layout and located just a stroll from Waverton Train Station, Village and Cafes.

- Bright and spacious lounge and dining area
- Stunning Caesarstone kitchen, with glass splashbacks
- Three bedrooms each with a built-in or walk in wardrobe
- Huge master bedroom with en-suite
- Entertainers courtyard with sunny East aspect
- Double lock-up garage with remote & ample storage
- Fantastic flowing floorplan with extra rumpus/office area

View

As advertised or by appointment

Agent

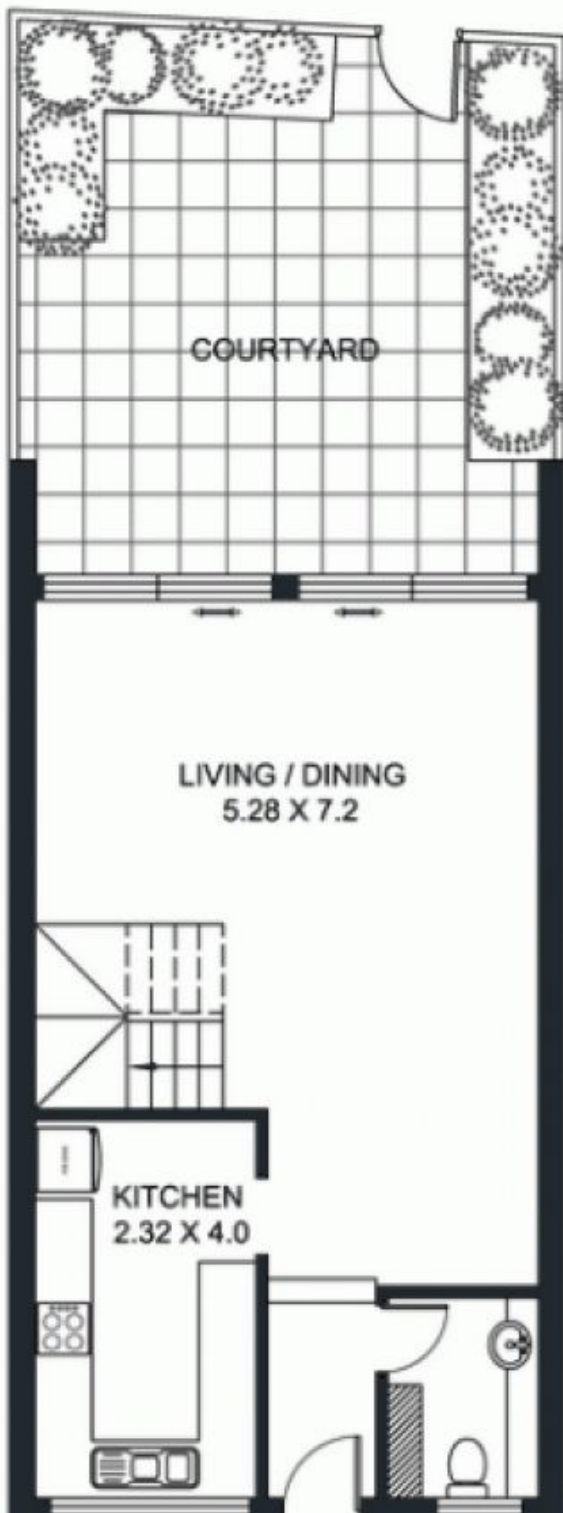
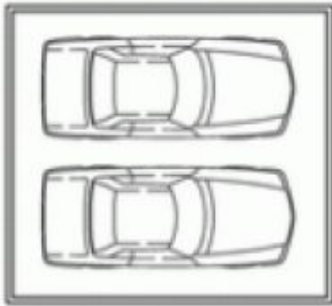
Sarah Fowell

 0437 492 129

 sarah@morton.com.au

morton.com.au

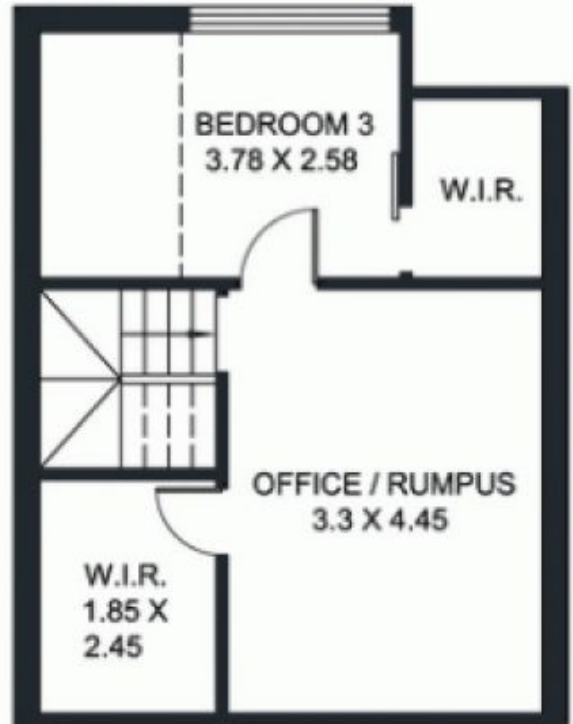
DOUBLE GARAGE



COURTYARD

LIVING / DINING
5.28 X 7.2

KITCHEN
2.32 X 4.0



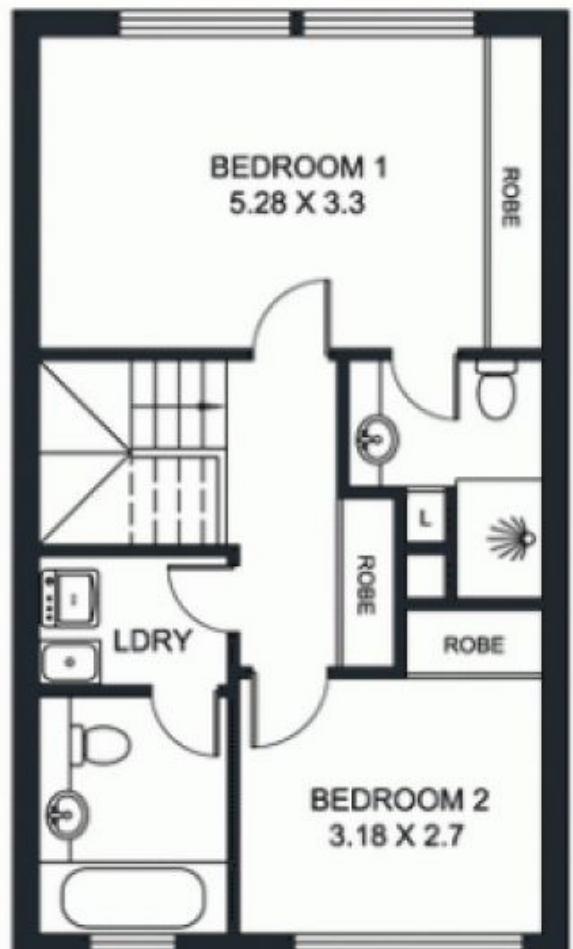
BEDROOM 3
3.78 X 2.58

W.I.R.

OFFICE / RUMPUS
3.3 X 4.45

W.I.R.
1.85 X
2.45

LOFT FLOOR



BEDROOM 1
5.28 X 3.3

ROBE

LDRY

ROBE

ROBE

BEDROOM 2
3.18 X 2.7