



# morton.

**St Leonards** 805/10 Atchison Street

 2  2  1

To register your interest and be kept up to date with inspections times, please click "Email Agent" or book an inspection directly at <http://morton.com.au/renting/rental-listings.php>

Space, style and quality finishes will define this brand new apartment nestled in a prime position of Air St Leonards. Designed by Robertson and Marks, the Air development offers seamless light-filled indoor/outdoor living in a highly sought after vibrant location.

- South-East Facing
- Oak timber flooring and wool blend carpets
- Full height floor to ceiling glass windows
- Reverse cycle ducted air conditioning
- CaesarStone bench tops and polyurethane cabinetry
- LED lights, internal laundry, NBN and Foxtel wiring
- Open air pool, gym, spa and wellness centre
- Minutes away from St Leonards station
- One secured car space plus one storage cage

## View

As advertised or by appointment

## Agent

**Sarah Fowell**

 0437 492 129

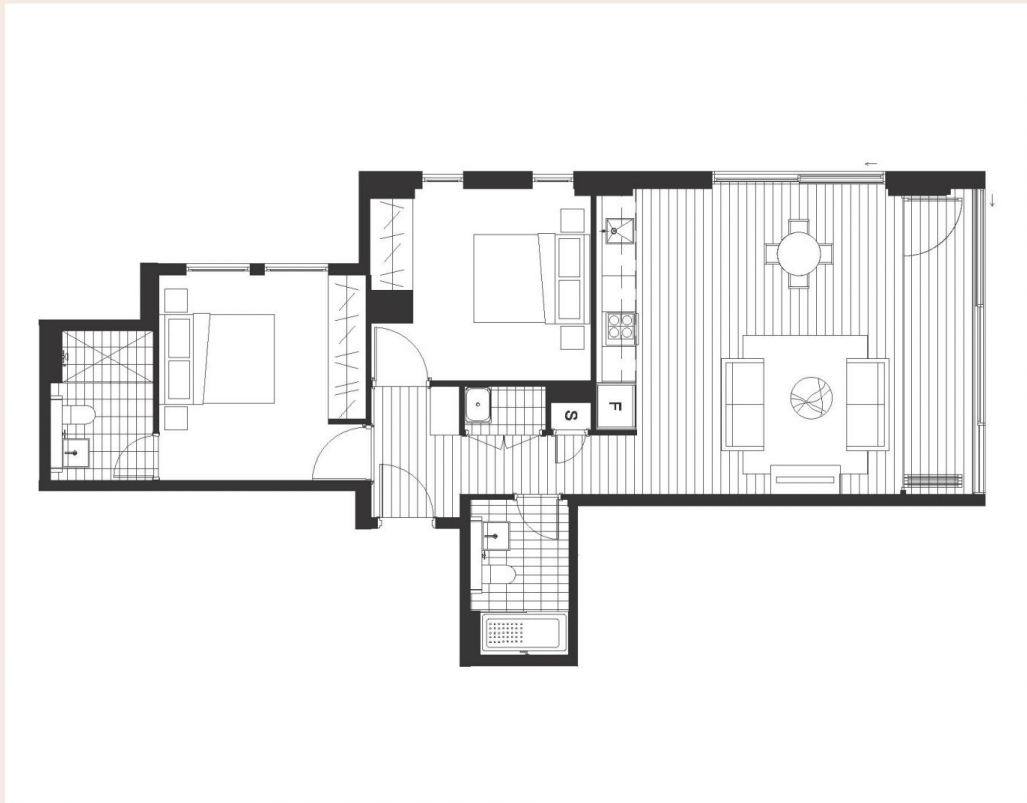
 [sarah@morton.com.au](mailto:sarah@morton.com.au)

[morton.com.au](http://morton.com.au)

## Two bed Apartment

605, 705, 805, 905, 1005, 1105,  
1205, 1305, 1505, 1605, 1705,  
1805, 1905, 2005, 2105, 2205,  
2305, 2505

Internal Area: 77m<sup>2</sup>



1800 806 088

[airstleonards.com.au](http://airstleonards.com.au)

Disclaimer: This layout plan was produced prior to construction and has been prepared for marketing purposes only. The information is believed to be correct but is not guaranteed. Changes may be made during construction and dimensions, areas, fittings and finishes are subject to change in accordance with the contract for sale. The position of furniture and furnishings should not be taken to be indicative of final positions of power points, tv connections points and the like. Prospective purchaser must rely on their contract for sale for the list of inclusions. Bulkheads for services are not depicted.

**HOLDMARK** / **CBRE**

**AIR**  
APARTMENTS / ST LEONARDS