



morton.

North Sydney 304/1A Eden Street

🛏 2 🚿 2 🚗 1

Set in a superb peaceful location convenient to both local/CBD transport and a cosmopolitan lifestyle where you are moments walk away from cafes, restaurants and only a short drive to the CBD.

- Brand new quality fixtures and finishes
- Sizeable balcony, overlooking tree-lined district
- East facing position, natural light throughout
- Spacious open plan living, with timber floors
- Gourmet kitchen, Smeg appliances
- Master bedroom, walk-in robe and ensuite
- Spacious second bedroom, with built-in robes
- Internal laundry, with dryer
- Air conditioning in living and bedroom
- Under cover parking space and storage cage
- Secure building, intercom and lift access

View

As advertised or by appointment

Agent

Sarah Fowell

📞 0437 492 129

✉ sarah@morton.com.au

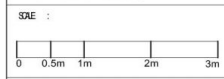
morton.com.au

APARTMENT 3D

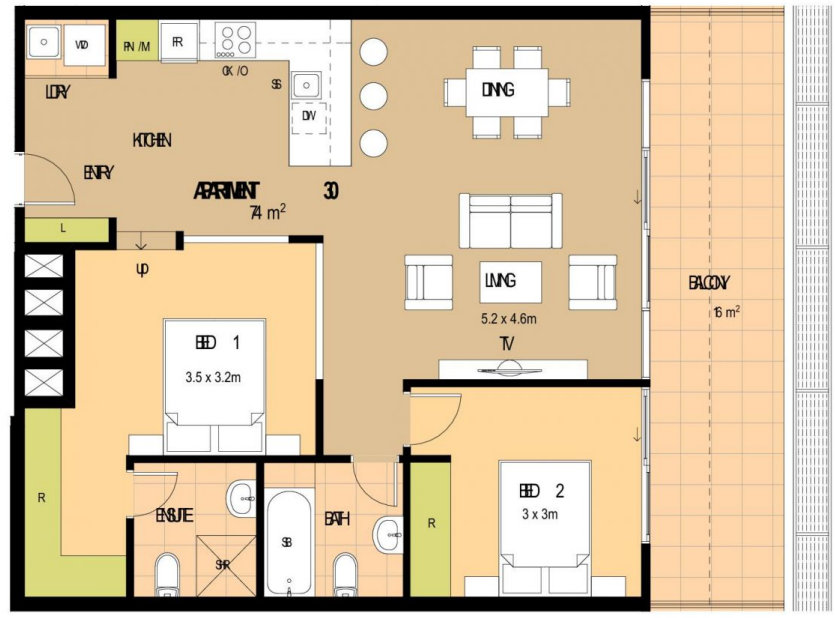
SFRA	UNT	3D
USE		2 BEDROOM
AREAS		2 BEDROOMS
FRONT		1 OR PARK
INTERNAL		74 m ²
BUILDING		8 m ²
SKIN		1 m ²
FRONT		6 m ²
TOTAL AREA		90 m ²

- KEY :
- L - LAMB
 - LDY - LAUNDRY
 - VD - WARDEN / WARD
 - SR - SHOWER
 - C - CLOSET
 - R - REFRIG
 - SS - SINK
 - RR - REFRIG
 - SS - SINK
 - DW - DRAINAGE
 - OK / IO - OVEN / ICEBOX
 - PA / M - PANTRY / MICROWAVE
 - LS - LIFT

- COLOR KEY
- GREEN - GREEN
 - TRAFERIE SIDE - TRAFERIE SIDE
 - SELECTED SPOTED QUM FLOOR - SELECTED SPOTED QUM FLOOR
 - SKIN - SKIN



DISCLAIMER: THE INFORMATION IS NOT TO BE USED AS A BASIS FOR THE DESIGN OF BUILDING STRUCTURES AND TO NOT CONSTITUTE AN OFFER OF CONTRACT. ALL DIMENSIONS AND QUANTITIES ARE APPROXIMATE. FOR THE USE AND DESIGN OF THE BUILDING, THE USER AND ARCHITECT SHOULD CONSULT WITH THE ARCHITECT. THE ARCHITECT IS NOT RESPONSIBLE FOR THE DESIGN OF THE BUILDING. THE ARCHITECT IS NOT RESPONSIBLE FOR THE DESIGN OF THE BUILDING. THE ARCHITECT IS NOT RESPONSIBLE FOR THE DESIGN OF THE BUILDING.



TOTAL AREA 90 m²