



**morton.**

**Meadowbank** C1003/41-45 Belmore Street

 1  1  1

---

Available to inspect. Register your interest to be advised of inspection times:

- Click on the virtual tour/video button to book a date/time immediately OR
  - Send an enquiry to us to receive inspection details in your inbox OR
  - Visit our website, select the property you want to inspect and click the book inspection button
- 

**View**

As advertised or by appointment

**Agent**

**Sarah Fowell**

 0437 492 129

 sarah@morton.com.au

Register your interest now to secure an opportunity to reside in the recently completed Oxford building at Shepherds Bay Meadowbank. With green parklands, the waterfront, and superior transport links, Meadowbank is a well regarded and highly sought after locale.

**morton.com.au**



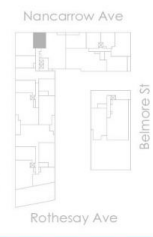
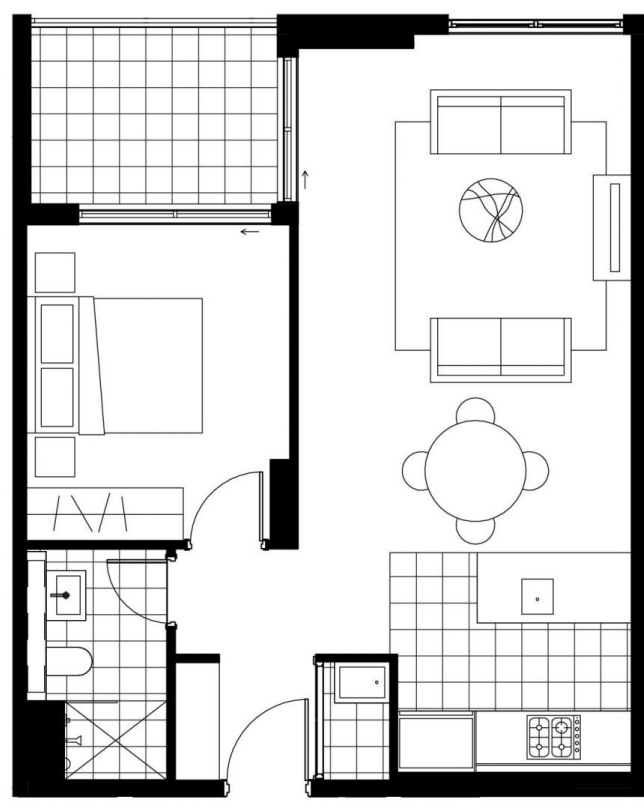
# 1 bedroom

Apartment \_\_\_\_\_

Price \_\_\_\_\_

- C10.3      C15.6
- C11.3      C8.3
- C12.6      C9.3
- C13.6

|                |                  |
|----------------|------------------|
| Internal Area: | 51m <sup>2</sup> |
| External Area: | 6m <sup>2</sup>  |
| Total Area:    | 57m <sup>2</sup> |



1800 202 784

[shepherdsbay.com.au](http://shepherdsbay.com.au)

Disclaimer: This layout plan was produced prior to construction and has been prepared for marketing purposes only. The information is believed to be correct but is not guaranteed. Changes may be made during construction and dimensions and areas are approximate only and together with the fittings and finishes are subject to change in accordance with the contract for sale. The position of the furniture and furnishings should not be taken to be indicative of final positions of power points, TV connection points and the like. Prospective purchasers must rely on their contract for sale for the list of inclusions. Bulkheads for services are not depicted. The purchaser must rely on the contract for sale.

