



morton.

LITTLE BAY 203/30 Harvey Street

 3  2  2

Be one of the first to live in the transformed Prince Henry redevelopment at Little Bay, located opposite peaceful parklands and neighbouring bushlands. Only a few minutes walk from Little Bay beach is the newly completed 'Fairview' building of the Coastal Quarter. The east facing apartment offers a bright and leafy outlook with water views, coupled with cutting edge appliances and inclusions.

- Wool carpet in bedroom, floorboards in living with tiled kitchen
- Generous balcony ideal for entertaining or taking in the view
- Kitchen features stainless steel appliances and stone bench tops
- Internal laundry includes Fisher & Paykel dryer and laundry tub
- East facing balcony with water views

View

As advertised or by appointment

Agent

Sarah Fowell

 0437 492 129

 sarah@morton.com.au

morton.com.au

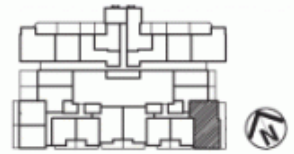


Floor Plan

COASTAL QUARTER
F-203
PRINCE HENRY AT LITTLE BAY

| | |
|------------------|-----------|
| Bedrooms | 3 + Media |
| Bathrooms | 2 |
| Basement Parking | 2 |

| | |
|-------------------|----------------|
| Internal Area | 119 sqm |
| External Area | 26 sqm |
| TOTAL AREA | 145 sqm |



Contact
(02) 9256 5968
www.princehenrylittlebay.com.au



Prince Henry
AT LITTLE BAY

A **BROOKFIELD**
RESIDENTIAL PROPERTY