



morton.

LITTLE BAY 7/2 Gull Street

 1  1  1

** Inspection times are available. Please send through an enquiry to be notified of times or register your details through our online booking system at: www.mortonandmorton.com.au/9535973

Be the first to live in the transformed Prince Henry redevelopment at Little Bay, located opposite peaceful parklands and neighbouring bushlands. Only a few minute's walk from Little Bay beach is Coastal Quarter, this distinctive building stylishly brings together the rich art-deco designs and classic elegance of the past with contemporary new spaces and stunning timeless finishes.

- Wool carpet in bedroom and tiles in dining and kitchen areas
- Generous balcony ideal for entertaining or taking in the view
- Kitchen features AEG appliances and stone bench tops
- Internal laundry includes Fisher & Paykel dryer and laundry tub

View

As advertised or by appointment

Agent

Sarah Fowell

 0437 492 129

 sarah@morton.com.au

morton.com.au



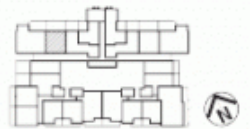
Floor Plan



COASTAL QUARTER
S-G07
PRINCE HENRY AT LITTLE BAY

Bedrooms	1 + Study
Bathrooms	1
Basement Parking	1

Internal Area	65 sqm
External Area	26 sqm
TOTAL AREA	91 sqm



Contact
(02) 9256 5968
www.princehenrylittlebay.com.au



Prince Henry
AT LITTLE BAY

A BROOKFIELD
RESIDENTIAL PROPERTY

Disclaimer: Whilst the information on this plan has been carefully compiled and is correct at the time of publication (October 2015), the information and illustrations are indicative only and may be subject to change. Brookfield Residential Properties, its agents and its staff do not warrant the accuracy of the information or illustrations and do not accept any liability for any error or discrepancy in that information. Interested parties should make their own independent enquiries and investigations to verify themselves that any details herein are true and correct. The information and illustrations appearing on the plan are not to be taken as part of any contract of sale.