



morton.

Wentworth Point 504/4 Nuvolari Place

🛏 2 🚿 2 🚗 1

Impeccably presented and designed for a low maintenance contemporary lifestyle of convenience and quality, this superb residence is peacefully set in the heart of exclusive Wentworth Point. Moments to the magnificent Millennium Parklands, it is approximately a ten minute walk to Rhodes Station.

- Opening to embrace the light of a northern aspect
- Superb communal gardens, facilities include pool and gym
- Combined lounge and dining flows to a bbq balcony
- Stylish kitchen, CaesarStone benches and gas appliances
- Large study, master bedroom with built-ins and ensuite
- Storage cage, air conditioning and video intercom

View

As advertised or by appointment

Agent

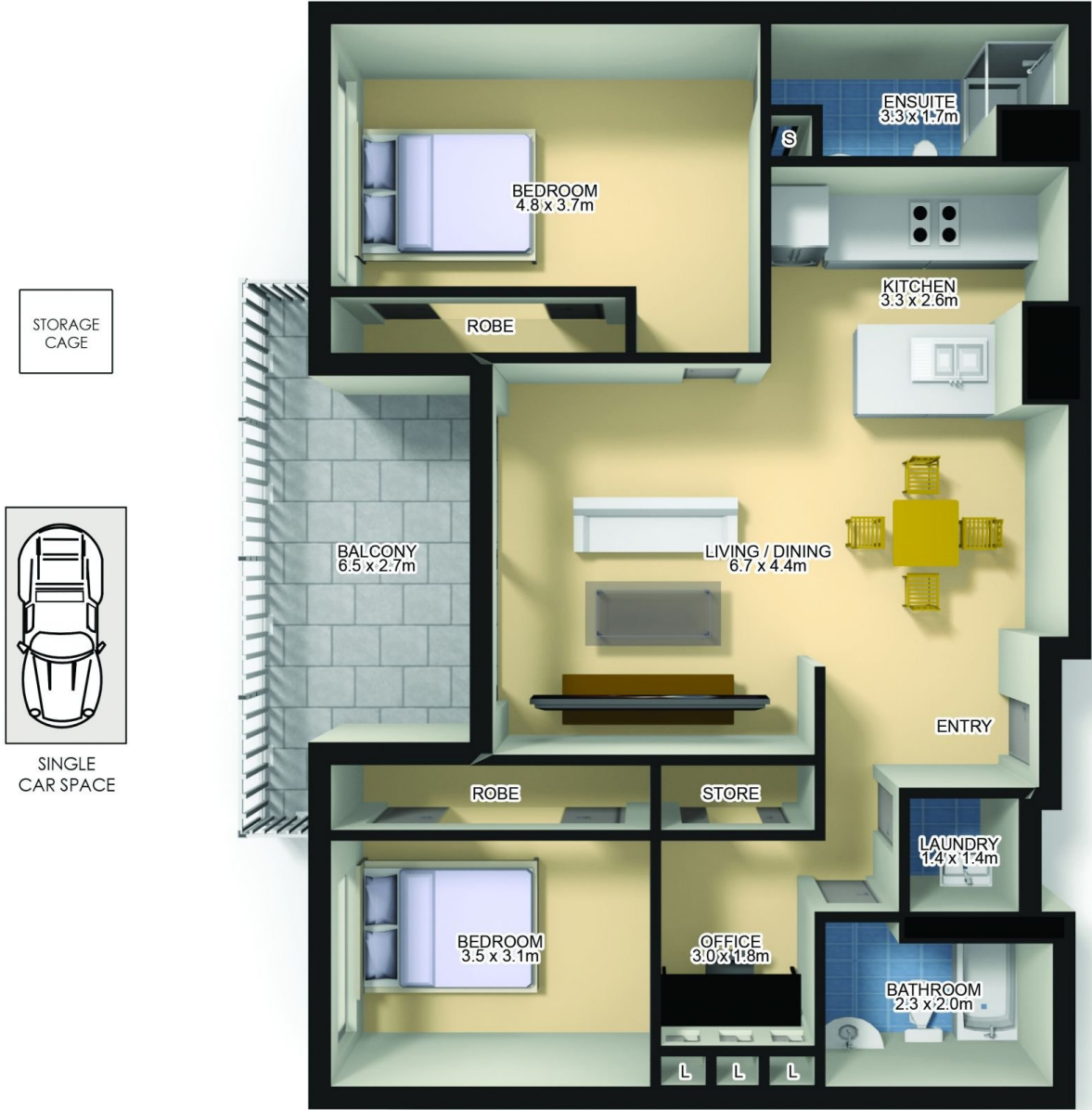
Sarah Fowell

📞 0437 492 129

✉ rentals@morton.com.au

morton.com.au

504/4 Nuvolari Place,
Wentworth Point



NORTH

Plans by
surroundpix
com.au
1300 30 32 40

This floor plan is intended as a guide only. Layout dimensions are approximate only. No representation or warranties of any nature whatsoever are given or intended. Any person using this information should rely on their own enquiries.