



morton.

Wentworth Point 408/27 Hill Road

 2  2  2

Offering both west and easterly aspects, this exceptionally designed flow-through apartment provides light, comfort and style in equal measure. Located in the popular Corisca building, this is an exceptional opportunity for the owner occupier or investor alike. At the heart of the Waterfront Community just moments from the Piazza, pulse gym, water's edge an outstanding lifestyle awaits.

- Large lounge dining with direct access to spacious west facing balcony
- Kitchen with stone bench top breakfast bar and stainless steel appliances
- Master ensuite with bathtub, walk-in wardrobes and east facing balcony
- Sizable second bedroom with built-ins and east facing balcony
- Internal laundry with dryer
- Audio/visual security intercom
- Reverse cycle air conditioning unit
- Secure undercover tandem parking

morton.com.au

View

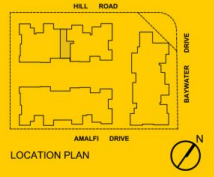
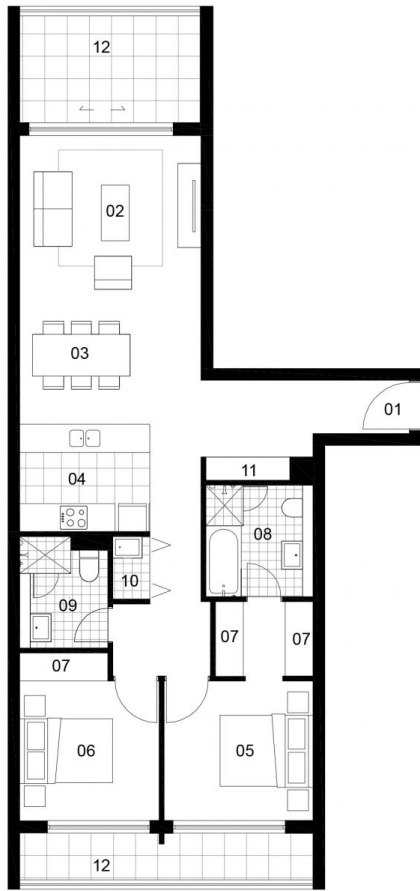
As advertised or by appointment

Agent

Sarah Fowell

 0437 492 129

 rentals@morton.com.au



UNIT 408
2 BEDROOM

INTERNAL AREA	: 82 sqm
TERRACE AREA	: 15 sqm
TOTAL AREA	: 97 sqm

ENTRY	01
LIVING	02
DINING	03
KITCHEN	04
BEDROOM1	05
BEDROOM2	06
WARDROBE	07
ENSUITE	08
BATHROOM	09
LAUNDRY	10
STORE	11
BALCONY/COURTYARD	12

Disclaimer: The particulars are set out as a general outline for the guidance of intending purchasers and do not constitute an offer or contract. All descriptions, dimensions, references to conditions and necessary permutations for use and other details are given in good faith and are believed to be correct, but any intending purchasers should not rely on them as statements or representations of fact, but must satisfy themselves by inspection or otherwise to the correctness of each item, and where necessary seek independent advice. No third party supplier or their agents has any authority to make or give any representations or warranty in relation to this property. * External areas may be larger for courtyard apartments. Refer to the detailed area schedule.

CORSICA