



morton.

Ryde 1131/100 Belmore Street

 2  2  1

Perched on the top level above the blossoming community along the Parramatta River, this sleek apartment provides an immaculate outlook. The property provides superb investment potential or a rewarding first step on the property ladder

- Top floor apartment overlooking the Parramatta River
- Entertainers balcony which is accessible from both bedrooms and lounge
- Open plan layout with generous sized lounge and dining
- Large kitchen with stainless steel appliances
- Enormous master bedroom with walk in robe and study nook
- Internal laundry and air conditioning throughout

View

As advertised or by appointment

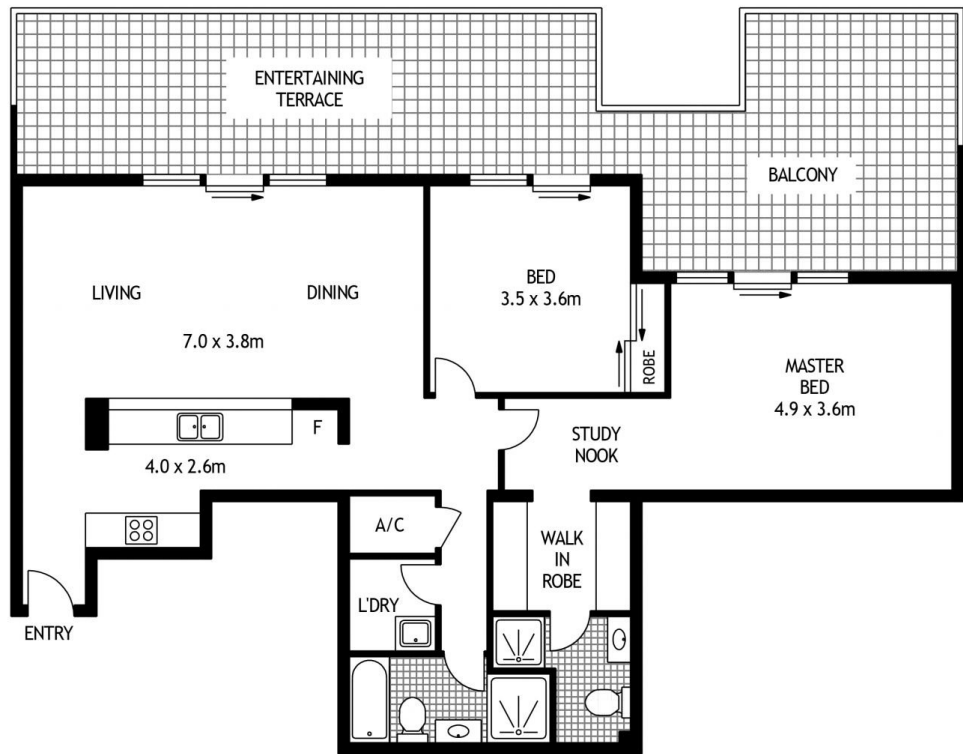
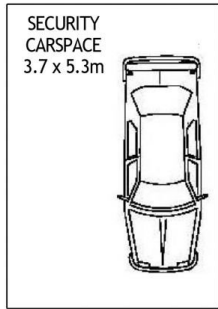
Agent

Sarah Fowell

 0437 492 129

 rentals@morton.com.au

morton.com.au



TOP FLOOR

1131/100 BELMORE STREET

RYDE

SCAPE Floor Planing Disclaimer: This floor plan is conceptual only. It is provided for illustrative purposes only and should not be relied upon. We make no guarantees to the correctness of this plan. All interested parties should make and rely on their own enquiries in determining the accuracy of the information contained in this floor plan.