



# morton.

**Wentworth Point** 683/4 The Crescent

 2  2  2

Positioned on the top floor of the highly sought-after Valencia building, this apartment has it all. Light, space, privacy, two car spaces and 'never to be built-out' water views are all on offer in this absolutely stunning unit. At the heart of the Waterfront Community just moments from the Piazza, pulse gym and water's edge this gem is a must to inspect and will not disappoint.

- Large lounge dining with direct access to spacious balcony
- Fitted kitchen with stone bench tops & stainless steel appliances
- Large master bed with ensuite & built-ins and private balcony
- Sizable second bedroom with built-ins and balcony
- Second bathroom with bath tub
- Internal laundry with dryer
- Ducted air conditioning throughout
- Audio/visual security intercom
- Secure undercover double parking space
- Short walk to bus stop, ferry services and soon to be open Homebush Bay Bridge

[morton.com.au](http://morton.com.au)

### View

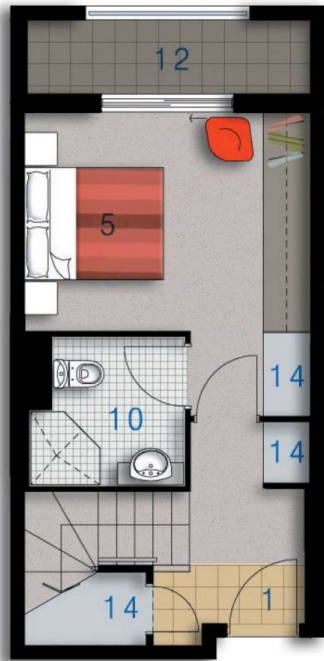
As advertised or by appointment

### Agent

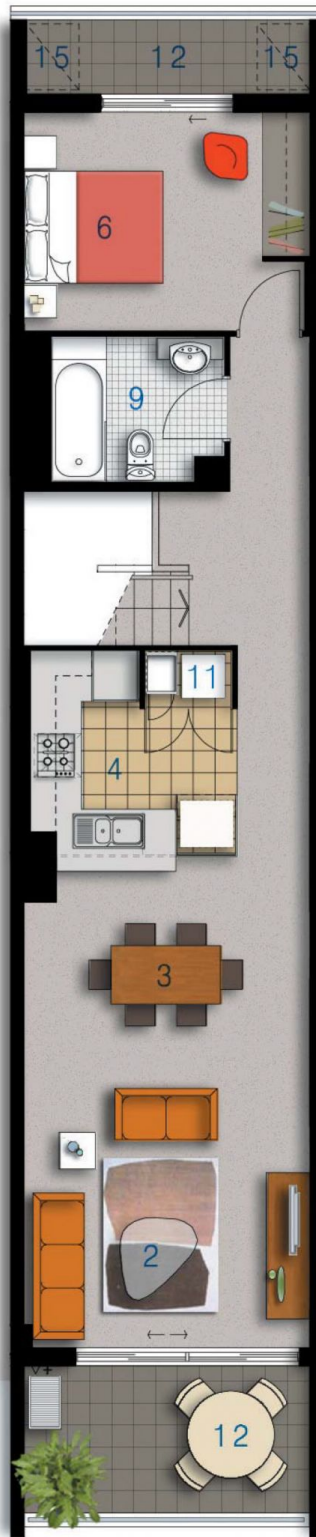
**Sarah Fowell**

 0437 492 129

 [rentals@morton.com.au](mailto:rentals@morton.com.au)

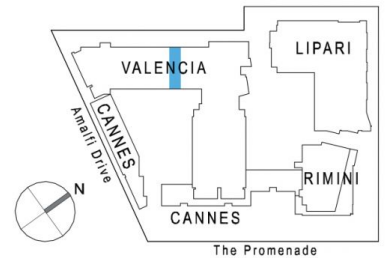


LOWER



UPPER

ENTRY	01
LIVING	02
DINING	03
KITCHEN	04
BEDROOM 1	05
BEDROOM 2	06
BATHROOM	09
ENSUITE	10
LAUNDRY	11
BALCONY	12
STORAGE	14
CLOTHES DRYING	15



# valencia

Unit 683

Lot Number	67
Type	2 Bedroom
Unit Area	94m <sup>2</sup>
Balcony	16m <sup>2</sup>
Total	110m <sup>2</sup>
Scale	1:100
Revision	A (12.02.07)

0 2.5 5M



Disclaimer: All Layouts are indicative only, and subject to change.