



# morton.

**Wentworth Point** 308/5 Stromboli Strait

 2  2  1

This light-filled and spacious double aspect apartment with leafy outlook represents the best of apartment living. In the heart of the Waterfront Community just moments from the Piazza, Pulse gym and water's edge, this top floor unit is sure to attract strong interest and is a must to inspect.

- Large lounge/dining with direct access to spacious balcony
- Fitted kitchen with stone bench tops and stainless steel appliances
- Large master bed with ensuite and built-ins
- Sizable second bedroom with built-ins
- Second bathroom with bath tub
- Internal laundry with dryer
- Audio/visual security intercom
- Secure undercover lock up garage
- Short walk to bus stop, ferry services and soon to be open Homebush Bay Bridge
- Close to The Piazza and Newington Shopping Village with an array of cafes and restaurants at your disposal

### View

As advertised or by appointment

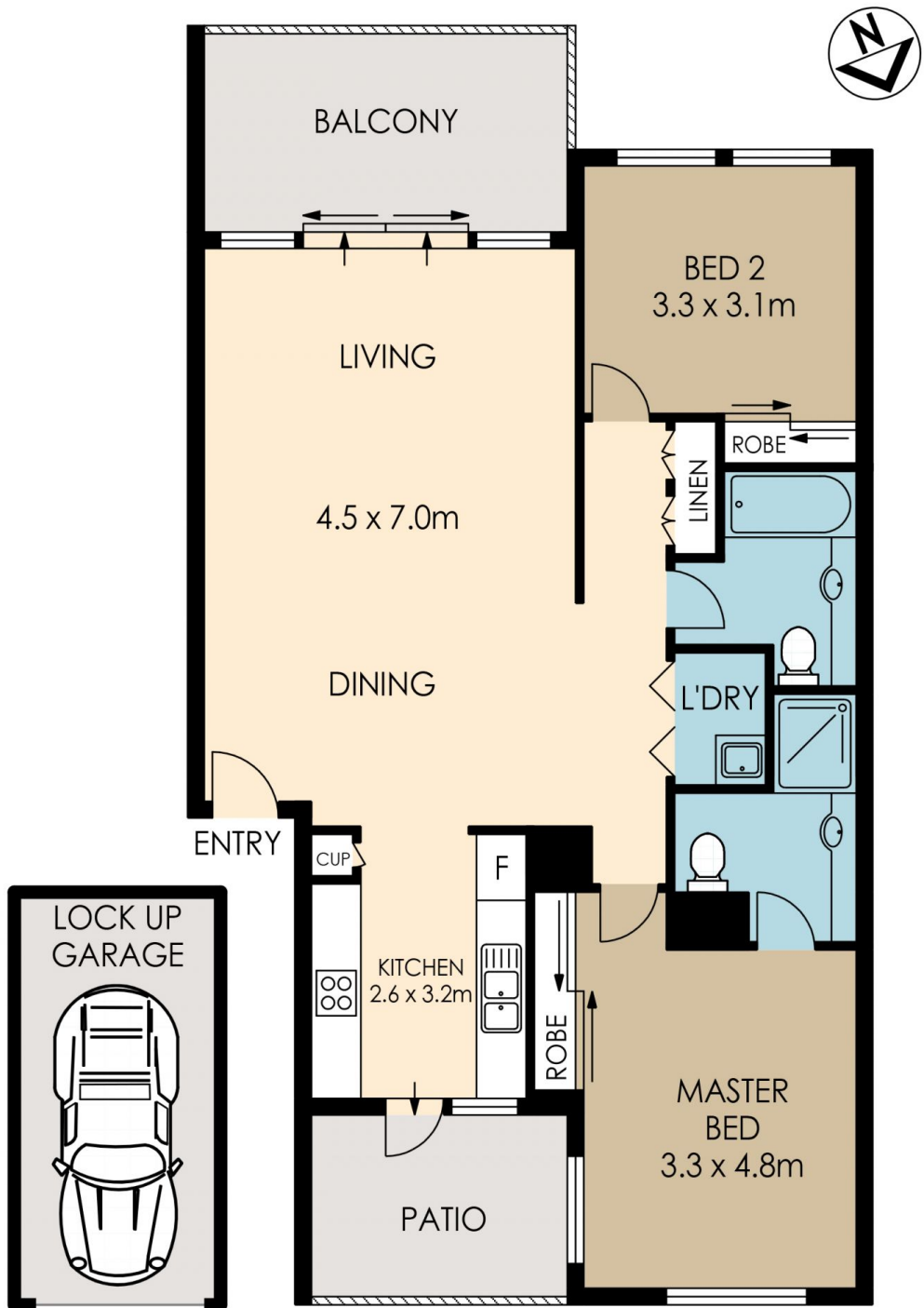
### Agent

**Sarah Fowell**

 0437 492 129

 [rentals@morton.com.au](mailto:rentals@morton.com.au)

[morton.com.au](http://morton.com.au)



# 308/5 Stromboli Strait, Wentworth Point

The information above is provided in good faith and has been provide to us from a variety of sources. We have not verified whether the information is accurate and do not have any belief one way or other in its accuracy. We do not accept any responsibility to any person for its accuracy and do no more than pass it on. All interested parties should rely on their own inquiries in order to determine whether or not this information is in fact accurate.