



# morton.

Wentworth Point 224/45 Amalfi Drive

🛏 1 🚿 1 🚗 1

Located in the popular Corsica building, this incredibly spacious apartment has a large open living dining area and direct access to a substantial private courtyard. Immaculately presented, this apartment is an ideal investment or first home purchase. Close to The Piazza and Newington Shopping Village with an array of cafes and restaurants at your disposal.

- Open plan lounge dining area
- Large courtyard ideal for entertaining
- Fully fitted kitchen with island stone bench-top
- Large bedroom with walk in wardrobe and direct bathroom access
- Internal laundry with dryer
- Audio/visual security intercom and air-conditioning
- Single parking with a storage cage
- Bus and Ferry services are moments away

### View

As advertised or by appointment

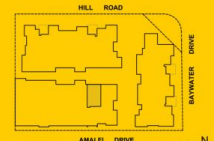
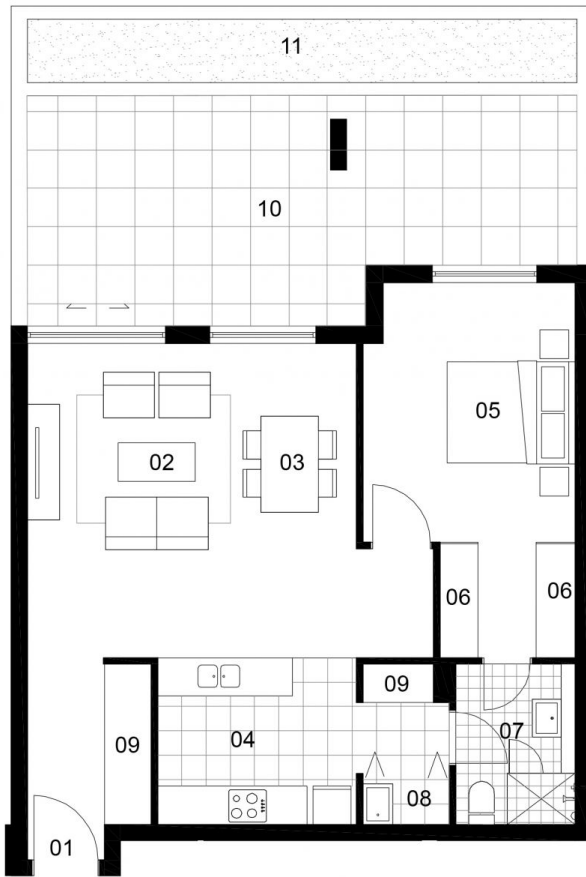
### Agent

**Sarah Fowell**

📞 0437 492 129

✉ rentals@morton.com.au

[morton.com.au](http://morton.com.au)



LOCATION PLAN

**UNIT 224**

1 BEDROOM

INTERNAL AREA	: 68 sqm
TERRACE AREA	: 36 sqm
TOTAL AREA	: 107 sqm

ENTRY	01
LIVING	02
DINING	03
KITCHEN	04
BEDROOM	05
WARDROBE	06
BATHROOM	07
LAUNDRY	08
STORE	09
BALCONY/COURTYARD	10
LANDSCAPE	11

Disclaimer: The particulars are set out as a general outline for the guidance of intending purchasers and do not constitute an offer or contract. All descriptions, dimensions, references to conditions and necessary permissions for use and other details are given in good faith and are believed to be correct, but any intending purchasers should not rely on them as statements or representations of fact, but must satisfy themselves by inspection or otherwise to the correctness of each item, and where necessary seek independent advice. No third party supplier or their agents has any authority to make or give any representations or warranty in relation to this property. \* External areas may be larger for courtyard apartments. Refer to the detailed area schedule.

**CORSICA**