



morton.

Wentworth Point 227/45 Amalfi Drive

 2  1  1

Located in the popular Corsica building, this well laid out two bedroom apartment offers a substantial terrace ideal for home entertaining. The unit features a large open living/dining area with direct access to large terrace. The fully fitted kitchen features a functional island, with ample stone bench top space & storage.

- Open plan lounge dining area
- Large terrace ideal for entertaining
- Fully fitted kitchen with island stone bench-top
- Two double bedrooms, both with built-ins
- Internal laundry with dryer
- Split system air-conditioning unit
- Audio/visual security intercom
- Single parking with storage cage.
- Short walk to bus stop and ferry services
- Close to The Piazza and Newington Shopping Village with an array of cafes and restaurants at your disposal

View

As advertised or by appointment

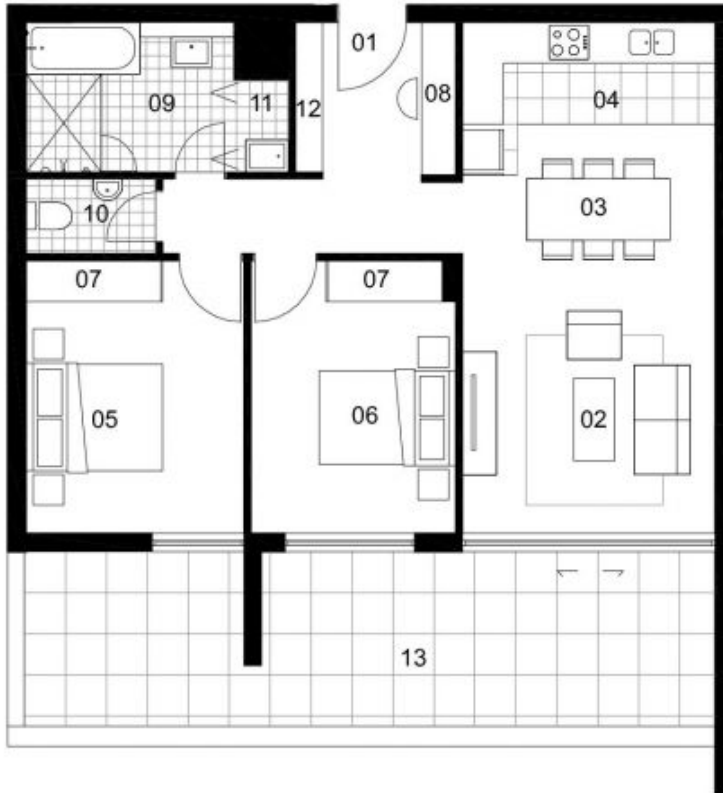
Agent

Sarah Fowell

 0437 492 129

 rentals@morton.com.au

morton.com.au



LOCATION PLAN

UNIT 227

2 BEDROOM

INTERNAL AREA	75 sqm
TERRACE AREA	26 sqm
TOTAL AREA	101 sqm

ENTRY	01
LIVING	02
DINING	03
KITCHEN	04
BEDROOM1	05
BEDROOM2	06
WARDROBE	07
STUDY	08
BATHROOM	09
WC	10
LAUNDRY	11
STORE	12
BALCONY/COURTYARD	13

Disclaimer: The particulars are set out as a general outline for the guidance of intending purchasers and do not constitute an offer or contract. All descriptions, dimensions, references to conditions and necessary permissions for use and other details are given in good faith and are believed to be correct, but any intending purchasers should not rely on them as statements or representations of fact, but must satisfy themselves by inspection or otherwise to the correctness of each item, and where necessary seek independent advice. No third party supplier or their agents has any authority to make or give any representations or warranty in relation to this property. * External areas may be larger for courtyard apartments. Refer to the detailed area schedule.

CORSICA