



morton.

Wentworth Point 253/2A The Crescent

 2  2  1

This delightfully designed and peacefully located 141 sqm split level apartment features a large private north-west facing ground floor terrace, ideal for alfresco entertaining or as a child's play area. The upper level provides a large open plan kitchen & living space with direct access to a terrace and external access to communal landscaped gardens and pool. The master ensuite and second bedroom, one on each level, both have direct access to outside spaces. In addition, the property offers an internal laundry, ducted reverse cycle air conditioning, secure single car space and storage cage.

- Premium waterfront building, quiet location
- Three external terraces and direct access to gardens & pool
- Popular split level design
- Fitted kitchen with stone benchtops & quality appliances
- Two sizable bedrooms one with ensuite
- Internal laundry with dryer
- Ducted reverse cycle air conditioning
- Audio/visual security intercom
- Single basement parking with adjoining large storage

morton.com.au

View

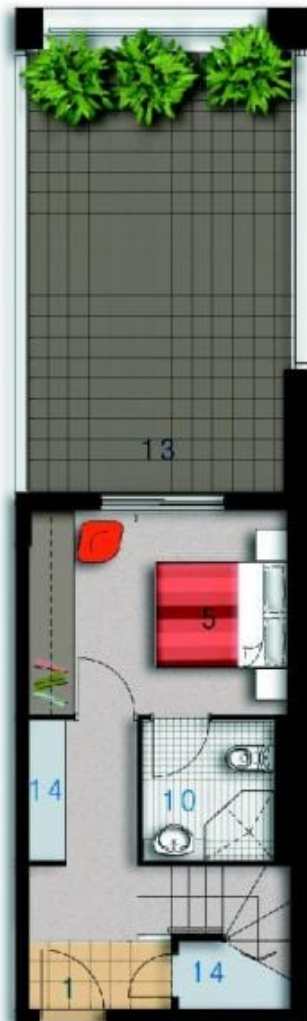
As advertised or by appointment

Agent

Sarah Fowell

 0437 492 129

 rentals@morton.com.au

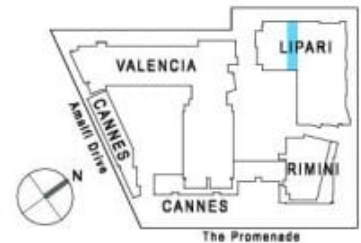


LOWER



UPPER

ENTRY	01
LIVING	02
DINING	03
KITCHEN	04
BEDROOM 1	05
BEDROOM 2	06
BATHROOM	09
ENSUITE	10
LAUNDRY	11
BALCONY	12
TERRACE	13
STORAGE	14
CLOTHES DRYING	15



Lipari

Unit 253

Lot Number	85
Type	2 Bedroom
Unit Area	90m ²
Balcony	6m ²
Terrace	42m ²
Total	138m ²
Scale	1:100



Disclaimer: All Layouts are indicative only, and subject to change.

0 2.5 5M