



morton.

Wentworth Point 202/3 The Piazza

 3  2  2

View

As advertised or by appointment

Agent

Sarah Fowell

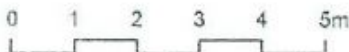
 0437 492 129

 rentals@morton.com.au

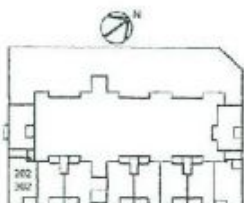
In the heart of The Waterfront Community this exceptionally designed three bedroom unit boasts two sizable living areas. Ideal for home entertaining, a large dining area with direct access to a north facing terrace adjoins a substantial fully fitted kitchen with an exceptional amount storage and stone bench top space. A separate spacious living room with sizable terrace offers pleasant views across The Piazza. In addition there are three large bedrooms, all with built-in cupboards, one with ensuite bathroom, a separate bathroom with bathtub, internal laundry, three split system air conditioning units and two separate lock up garages one, with a large amount of storage space.

- Large Living room with direct access to balcony
- Separate spacious dining room adjoining kitchen
- Fitted kitchen with ample stone benchtops space gas cooking, dishwasher and microwave
- Large master bed with ensuite and built-ins
- Sizable second and third bedrooms with built-ins
- Internal laundry with dryer

morton.com.au



"The information contained herein is intended as an introduction to the general content of the project and is subject to variation. Interested parties should rely on their own enquiries and the contract for sale. The developer reserves the right to vary from these descriptions as it deems necessary or as any relevant authority may require."



3 BEDROOM

APARTMENT 202,302

TYPE-A

BUILDING AREA=123 m²

OUTDOOR AREA=16 m²

TOTAL AREA=139 m²

LOT 11

PORTOFINO