



# morton.

**WENTWORTH POINT** 25 Bennelong Road

 2  1  1

Two bedrooms, one bathroom, one secure car space, 67sqm internal, south west aspect with views to Sydney Olympic Park, approx six years old, long term tenant on expired lease, very well maintained, outdoor pool for occupants of Positano building.

Utilize the facilities of The Waterfront including state of the art gymnasium, indoor heated lap pool, tennis courts, cafes, restaurants, doctor/dentist/pharmacy, day spa.

Enjoy the parklands of the Olympic Park precinct, buses to Strathfield, Rhodes and Lidcombe, Rivercat to City and Parramatta.

Strata Levies \$798 pq approx

Council Rates \$190 pq approx

Water Rates \$135 pq approx

### View

As advertised or by appointment

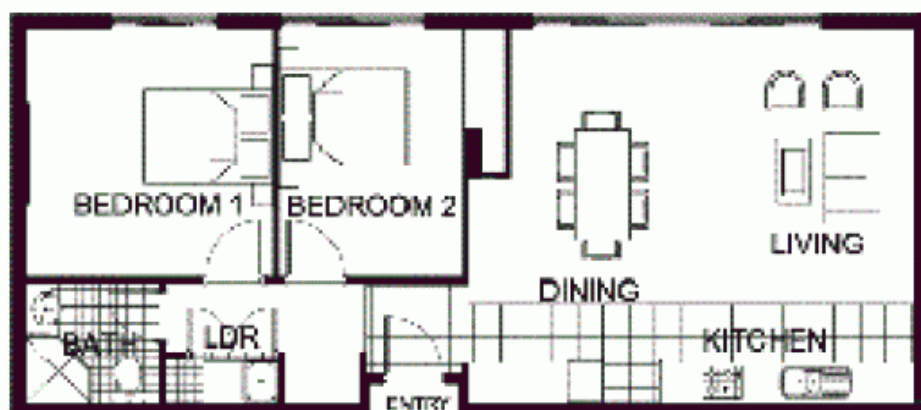
### Agent

**Sarah Fowell**

 0437 492 129

 rentals@morton.com.au

[morton.com.au](http://morton.com.au)



\*This floor plan and dimensions are for information only and do not constitute a contract. The developer reserves the right to change these dimensions and details without notice and without liability.



**THE WATERFRONT**  
AT HOMERUSH BAY

2 BEDROOM

APARTMENT 231(Exist No.204)

INTERNAL AREA 69 sqm

TOTAL AREA 80 sqm



LEVEL 2

POSITANO