



# morton.

**WENTWORTH POINT** 1 The Piazza

 1  1  1

Exceptional ground floor apartment with large 36sqm terrace, easterly aspect, good privacy, open plan living, quality appliances, internal laundry with dryer, video intercom, secure basement parking, access to Pulse Lifestyle facilities including heated lap pool, gymnasium, tennis courts, kayak club, cafes on site, close proximity to Sydney Olympic Park sport and recreation facilities.

Strata Levies \$1112 pq approx  
Council Rates \$190 pq approx  
Water Rates \$135 pq approx

### View

As advertised or by appointment

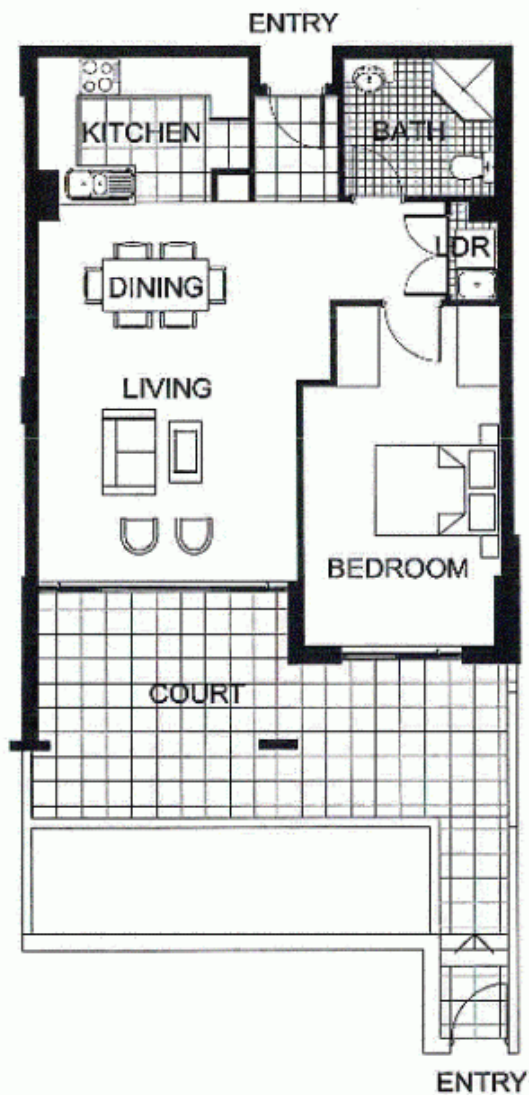
### Agent

**Sarah Fowell**

 0437 492 129

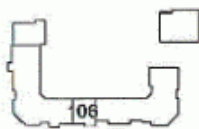
 rentals@morton.com.au

[morton.com.au](http://morton.com.au)



0 1 2 3 4 5

"The information contained herein is intended as an introduction to the general content of the project and is subject to variation. Interested parties should rely on their own enquiries and the contract for sale. The developer reserves the right to vary from these descriptions as it deems necessary or as any relevant authority may require."



1 BEDROOM

APARTMENT 106

TYPE 1L

INTERNAL AREA 59sqm

OUTDOOR AREA 36sqm

TOTAL AREA 95sqm



LEVEL 1

CAPRI

THE WATERFRONT  
AT HOMEBUSH BAY