



morton.

WENTWORTH POINT 3 Stromboli Strait

 2  2  1

Popular layout with flow through design, balconies front and rear, open plan living and dining room and walk through kitchen to your breakfast balcony.

Stone benchtops, dishwasher, gas cooking, microwave. Main bedroom with ensuite and access to balcony, second bathroom, built in robes, internal laundry with dryer.

Enjoy The Waterfront 'Pulse Club' with state of the art gym, indoor heated lap pool, steam room and tennis courts, Cafes, Restaurants, Day Spa, Hairdresser and Medical Centre on site. Community bus operating six days a week to Strathfield Station, Rhodes Shopping Centre Excellent value.

Strata Levies \$ 745 p/q approx
Council Rates \$ 165 p/q approx
Water Rates \$ 122 p/q approx

View

As advertised or by appointment

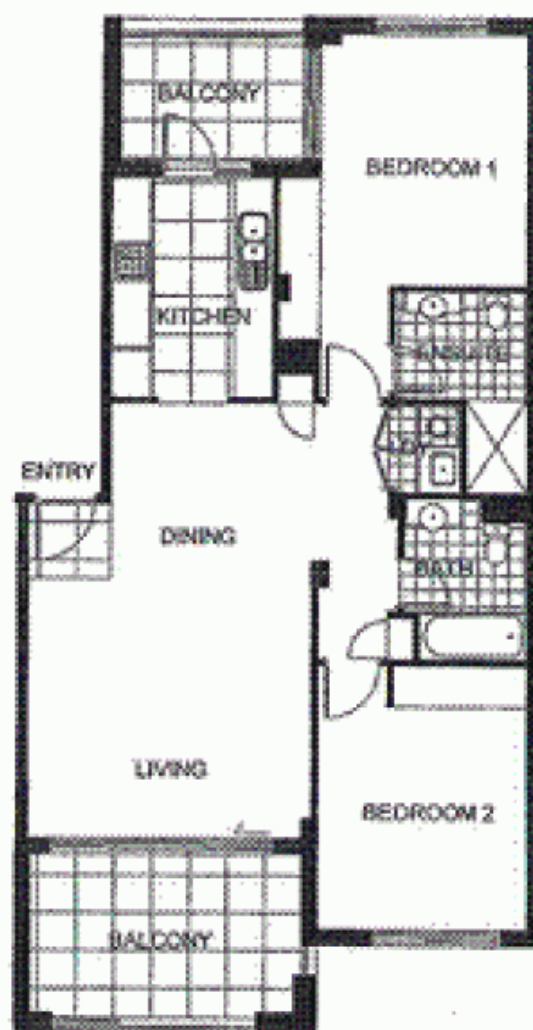
Agent

Sarah Fowell

 0437 492 129

 rentals@morton.com.au

morton.com.au



0 1 2 3 4 5

*The information contained herein is intended as an indication for the general layout of the project and is subject to change. Interested parties should verify on their own properties and the market for sale. The developer reserves the right to vary from these descriptions as it deems necessary or as any relevant authority may require.



LEVEL 2



THE WATERFRONT
AT HONEYBUSH BAY

2 BEDROOM

APARTMENT 225

TYPE C2

INTERNAL AREA 89 sqm

OUTDOOR AREA 17 sqm

TOTAL AREA 106 sqm

NAPOLI