



# morton.

**WENTWORTH POINT** 4 The Crescent

🛏 2 🚿 2 🚗 1

Prestige apartment on levels 4/5 in premium building, includes high quality finishes, reverse cycle ducted air conditioning, stone benchtops, stainless steel appliances including microwave and dishwasher, two bedrooms; one on each level, two bathrooms, internal storage plus storage cage in basement.

Features:

- \* Premium building
- \* Waterviews to Rhodes
- \* Bedroom on each level
- \* Ducted Air conditioning
- \* Internal storage plus storage cage
- \* Outdoor pool for building residents only
- \* Access to heated pool, gymnasium and tennis courts

Strata Levies \$1236 p/q

Council Rates \$ 207 p/q approx

Water Rates \$ 140 p/q approx

**View**

As advertised or by appointment

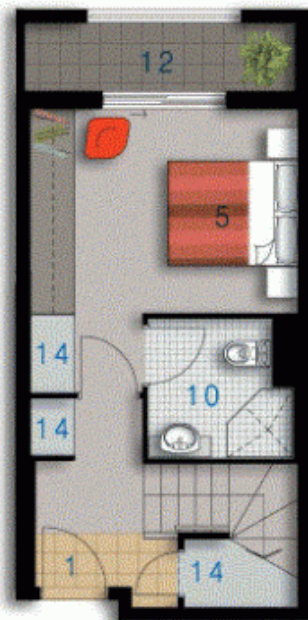
**Agent**

**Sarah Fowell**

📞 0437 492 129

✉ rentals@morton.com.au

[morton.com.au](http://morton.com.au)

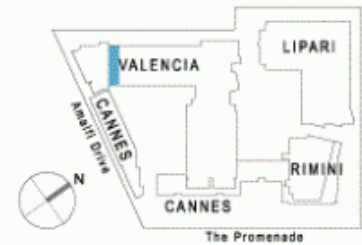


LOWER



UPPER

ENTRY	01
LIVING	02
DINING	03
KITCHEN	04
BEDROOM 1	05
BEDROOM 2	06
BATHROOM	09
ENSUITE	10
LAUNDRY	11
BALCONY	12
STORAGE	14
CLOTHES DRYING	15



# valencia

Unit 484

Lot Number	27
Type	2 Bedroom
Unit Area	94m <sup>2</sup>
Balcony	16m <sup>2</sup>
Total	110m <sup>2</sup>
Scale	1:100
Revision	A (12.02.07)



Disclaimer: All Layouts are indicative only, and subject to change.

0 2.5 5M