



morton.

WENTWORTH POINT 25 Bennelong Road

 2  2  2

Perched on the 7th floor of the Positano building this well appointed two bedroom apartment enjoys generous accommodation, flow though design and northern orientation taking benefit of views up the river of Wentworth Point.

One great feature is the sheer size of the living area, complimented by a wide and deep balcony suitable for outdoor entertaining, all whilst enjoying the district and water outlook of the Wentworth Point precinct.

With an additional study and double parking , this apartment is definitely one to inspect.

- Air conditioning
- Situated on the top floor
- 107m2 of internal floorspace
- Moments to the Piazza
- Desirable building
- Separate study
- Double parking
- Segregated living and sleeping areas
- The Waterfront is a lifestyle project with state of the art

View

As advertised or by appointment

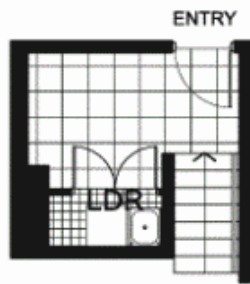
Agent

Sarah Fowell

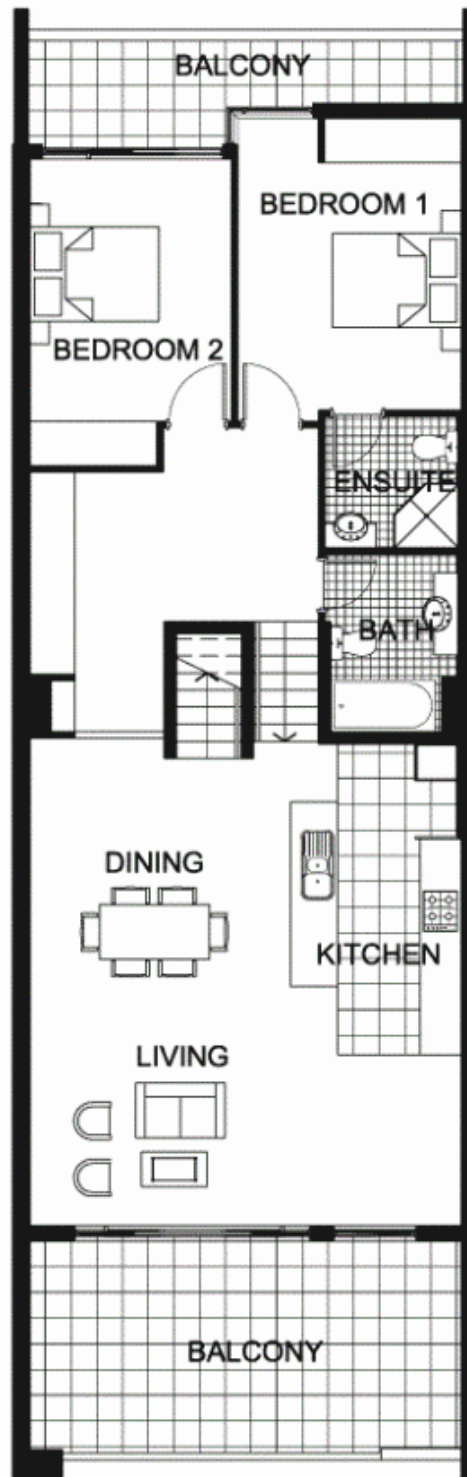
 0437 492 129

 rentals@morton.com.au

morton.com.au



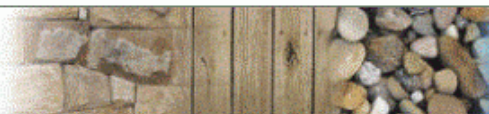
LEVEL 7



LEVEL 6



"The information contained herein is intended as an introduction to the general content of the project and is subject to variation. Interested parties should rely on their own enquiries and the contract for sale. The developer reserves the right to vary from these descriptions as it deems necessary or as any relevant authority may require."



THE WATERFRONT
AT HOMEBUSH BAY

2 BEDROOM

APARTMENT 739(Exist No.607)

INTERNAL AREA 107sqm

OUTDOOR AREA 26sqm

TOTAL AREA 133sqm



LEVEL 6

POSITANO