



morton.

WENTWORTH POINT 5 Stromboli Strait

 2  2  1

Top floor apartment, two bedrooms, two bathrooms with efficient flow through floorplan and lock up garage. Access to Pulse lifestyle club with heated indoor pool, professional gym, tennis courts and resort style outdoor pool. Cafes and restaurants on site, adjacent to Sydney Olympic Park and surrounded by 425 hectares of urban parkland.

- * Courtyard style low rise building
- * Natural light on three elevations
- * Efficient spacious floor plan
- * Main bathroom plus ensuite
- * Only one adjoining apartment
- * Basement lock up garage
- * Currently tenanted on an expired lease

Strata Levies \$1490 p/q
Council Rates \$230 p/q approx
Water Rates \$163 p/q approx

View

As advertised or by appointment

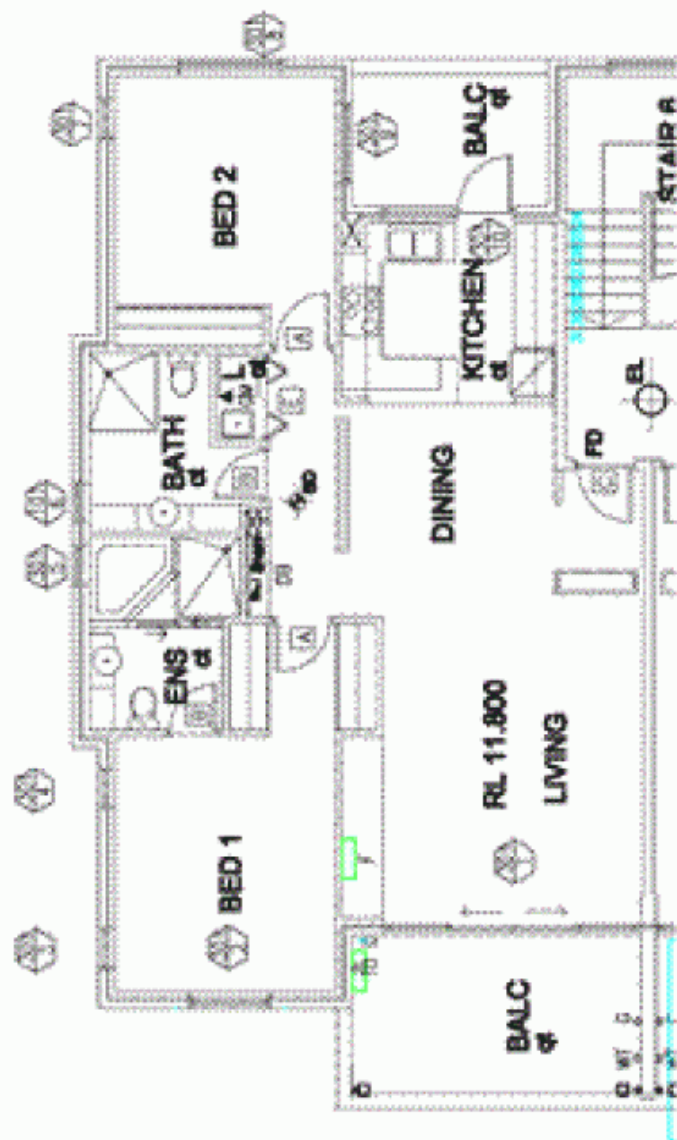
Agent

Sarah Fowell

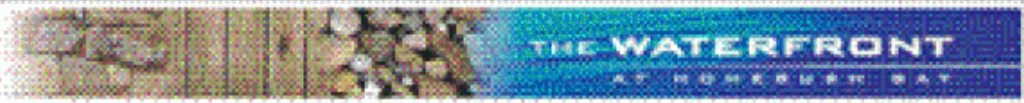
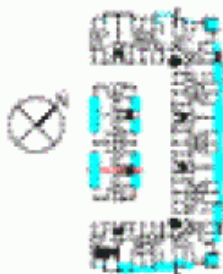
 0437 492 129

 rentals@morton.com.au

morton.com.au



"The information contained herein is intended as an introduction to the general content of the project and is subject to variation. Interested parties should rely on their own enquiries and the contract for sale. The Developer reserves the right to vary from these descriptions as it deems necessary or as any relevant authority may require."



2 BEDROOM

APARTMENT 301

TYPE D

INTERNAL AREA 90 sqm

OUTDOOR AREA 18 sqm

TOTAL AREA 108 sqm

CORFU