



morton.

WENTWORTH POINT 19 Baywater Drive

 1  1  1

At the top of the building with district views and sunny Northerly aspect, this as new one bedroom apartment would suit a first time buyer or astute investor with plenty of Tax leverage from depreciation available.

- * Sunny Northerly Aspect
- * Balcony from Living area and bedroom
- * Open plan living/dining and kitchen
- * Air conditioning
- * Contemporary fittings and finishes
- * Seperate Laundry
- * Audio/visual intercom
- * Secure basement parking plus storage cage
- * Access to Pulse Club with all resort style facilities
- * Currently tenanted, lease expiry June 2014

Strata Levies \$740 p/q

View

As advertised or by appointment

Agent

Sarah Fowell

 0437 492 129

 rentals@morton.com.au

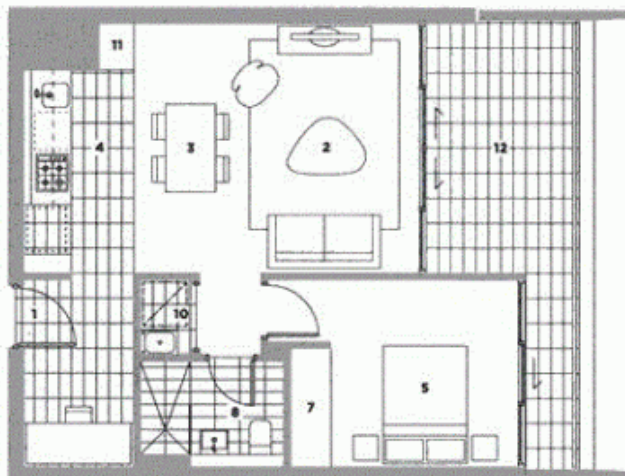
morton.com.au



ALORA
THE WATERFRONT

APARTMENT A.8.10
1 bedroom

Internal Area 50 sqm
External Area 10 sqm
Total Area 60 sqm



LEVEL 8



KEY

- 1 Entry
- 2 Living
- 3 Dining
- 4 Kitchen
- 5 Bedroom 1
- 6 Bedroom 2
- 7 Wardrobe
- 8 Bathroom
- 9 WC
- 10 Laundry
- 11 Store
- 12 Balcony/Courtyard



Scale 1:500

REV B



THE WATERFRONT
WENTWORTH POINT



Disclaimer: The particulars are set out as a general outline for the guidance of intending purchasers and do not constitute an offer or contract. All descriptions, dimensions, references to conditions and necessary permissions for use and other details are given in good faith and are believed to be correct, but any intending purchasers should not rely on them as statements or representations of fact, but must satisfy themselves by inspection or otherwise to the satisfaction of each item, and where necessary seek advice. No third party supplier or their agents has any authority to make or give any representations or warranty in relation to this property. *External areas may be larger for courtyard apartments. Refer to the detailed area schedule.