



morton.

WENTWORTH POINT 6 Baywater Drive

 2  1  1

Quality two year old apartment with spacious open plan kitchen and living room flowing to a generous balcony overlooking the landscaped podium.

- * Excellent natural light and airflow
- * Distict views
- * Modern contemporary finishes
- * Stone bench tops and stainless steel appliances
- * Main bathroom with seperate toilet
- * Good on floor storage plus basement storage cage
- * Secure basement car space
- * Opportunity to join Pulse Club with indoor heated pool, outdoor oasis pool, gym and tennis courts

Strata Levies \$936 p/q

View

As advertised or by appointment

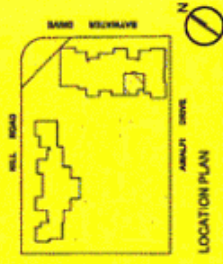
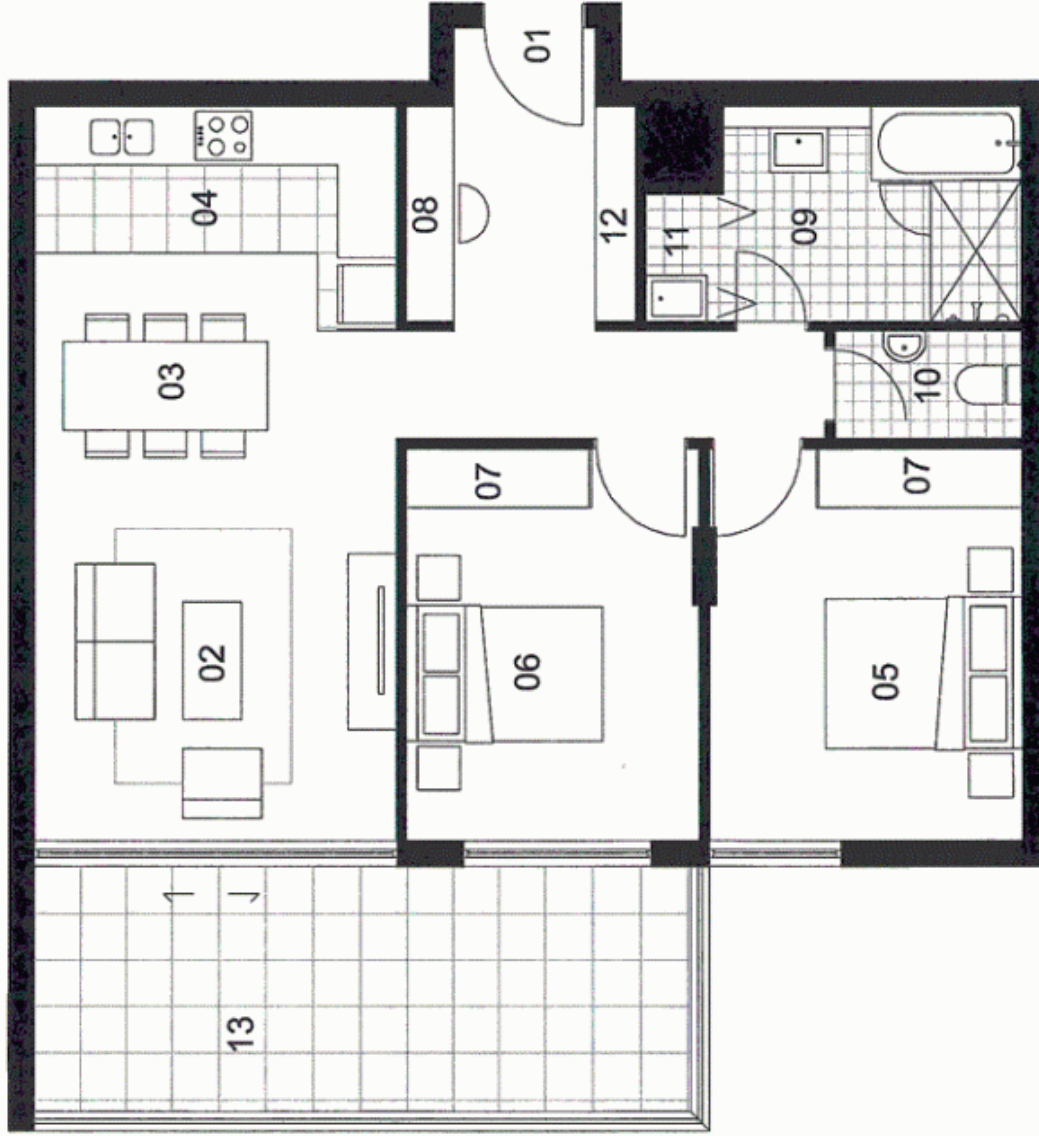
Agent

Sarah Fowell

 0437 492 129

 rentals@morton.com.au

morton.com.au



UNIT 813

2 BEDROOM
 INTERNAL AREA : 77 sqm
 TERRACE AREA : 17 sqm
 TOTAL AREA : 94 sqm

- 01 ENTRY
- 02 LIVING
- 03 DINING
- 04 KITCHEN
- 05 BEDROOM1
- 06 BEDROOM2
- 07 WARDROBE
- 08 STUDY
- 09 BATHROOM
- 10 WC
- 11 LAUNDRY
- 12 STORE
- 13 BALCONY/COURTYARD

CORSICA

Disclaimer: The particulars are set out as a general outline for the guidance of intending purchasers and do not constitute an offer or contract. All descriptions, dimensions, details, references to conditions and necessary permissions for use and other details are given in good faith and are believed to be correct, but any intending purchasers should not rely on them as statements or representations of fact, but must satisfy themselves by inspection or otherwise to the contrary of each item, and where necessary seek independent advice. No third party supplier or their agents has any authority to make or give any representations or warranty in relation to this property. * External areas may be larger for courtyard apartments. Refer to the detailed area schedule.