



morton.

WENTWORTH POINT 4 Stromboli Strait

 3  2  2

Huge first floor apartment, spanning 149 sqm, fabulous sunny corner position, with modern open plan living and dining, three bedrooms, two bathrooms and two sunny balconies creates the perfect setting for family living.

Double security parking side by side.

- Pool
- Gym
- Bedrooms Separate From Main Living Area
- Boutique Low Rise Block
- Cafes And Shops
- Concierge
- Free Shuttle Bus To Rhodes Shopping Centre And Strathfield Station
- High Ceilings
- Huge Open Plan Living And Dining
- Promenade
- Tennis Courts
- Two Balconies

morton.com.au

View

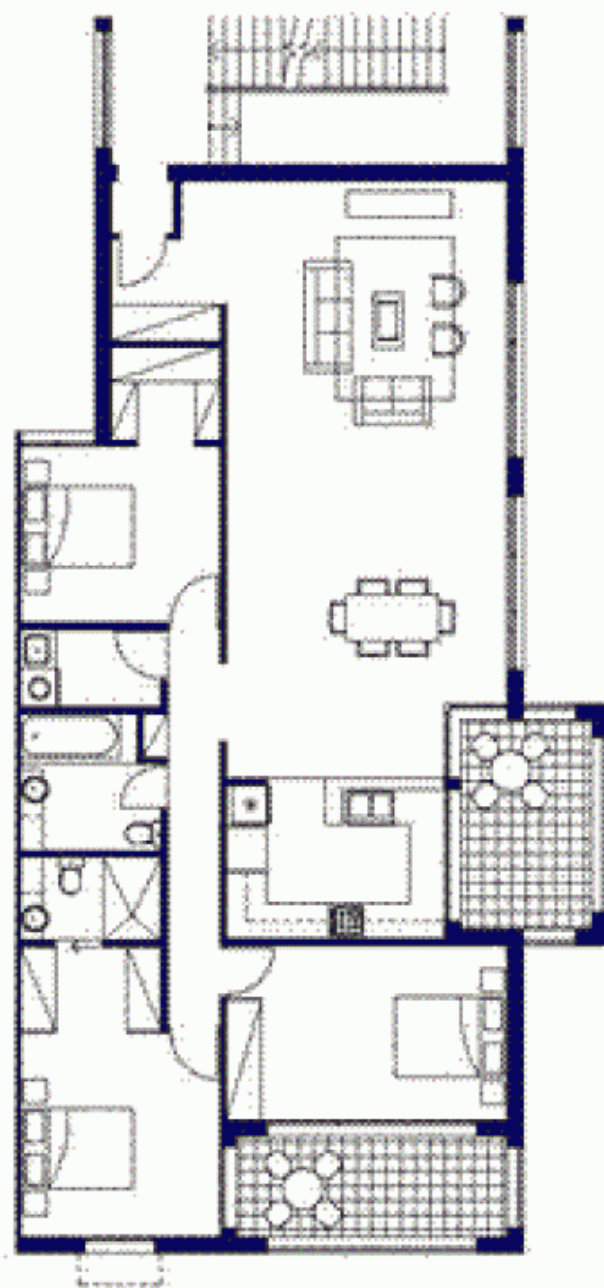
As advertised or by appointment

Agent

Sarah Fowell

 0437 492 129

 rentals@morton.com.au



0 1 2 3 4 5

*The actual size of area is subject to the availability of the specifications for the product and its quality. All the other conditions are to be considered and the contract will be signed for the unit only after the final drawing of the area is ready and approved by the client.



3 BEDROOM **UNIT 204** **TYPE F**

INTERNAL AREA 129 sqm OUTDOOR AREA 20 sqm TOTAL AREA 149 sqm

TORINO