



morton.

WENTWORTH POINT 305/19 Hill Road

 2  2  1

Spacious apartment with parkland outlook, six year old building, quality inclusions and fittings, two bedrooms; main bedroom with ensuite, separate living room, front and rear balconies providing morning and afternoon sun, lift access to basement parking and storage cage, suit owner occupier or investor, expired lease. Opportunity to join "Pulse' Club with indoor and outdoor pools, professional gym, tennis courts, mediterranean style Piazza with cafes and restaurants.



Strata Levies \$1039 p/a
Council Rates \$230 p/q approx
Water Rates \$163 p/q approx

View

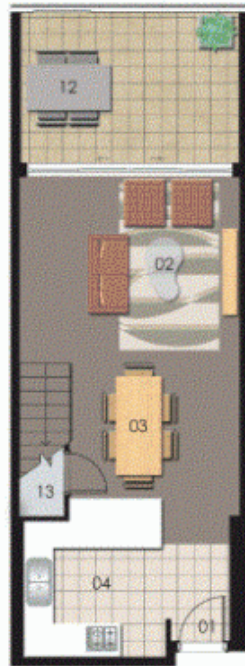
As advertised or by appointment

Agent

Sarah Fowell

 0437 492 129
 rentals@morton.com.au

morton.com.au



LEVEL 3



LEVEL 4



| | | | |
|-----------|----|----------|----|
| ENTRY | 01 | WARDROBE | 08 |
| LIVING | 02 | ENSUITE | 09 |
| DINING | 03 | BATHROOM | 10 |
| KITCHEN | 04 | LAUNDRY | 11 |
| BEDROOM 1 | 05 | BALCONY | 12 |
| BEDROOM 2 | 06 | STORAGE | 13 |
| BEDROOM 3 | 07 | | |



Unit 305

| | |
|------------|-----------|
| Lot Number | 11 |
| Type | 2 Bedroom |
| Unit Area | 94 sqm |
| Balcony | 29 sqm |
| Total | 123 sqm |