



# morton.

**WENTWORTH POINT** 730/25 Bennelong Parkw

 1  1  1

One bedroom apartment on level seven overlooking Olympic Archery Centre, open plan living, modern stainless steel appliances, bedroom with built ins, separate laundry and single basement car space. Suit investor or first home owner.

- \* District views to Sydney Olympic Park
- \* 52 sqm internal
- \* Secure basement parking
- \* Seperate pool for residents of Positano and Monaco buildings
- \* Access to Pulse Club with all resort style facilities
- \* Cafes and restaurants on site
- \* Surrounded by 425 hectares of urban parkland
- \* Great for walking and cycling enthusiasts

#### View

As advertised or by appointment

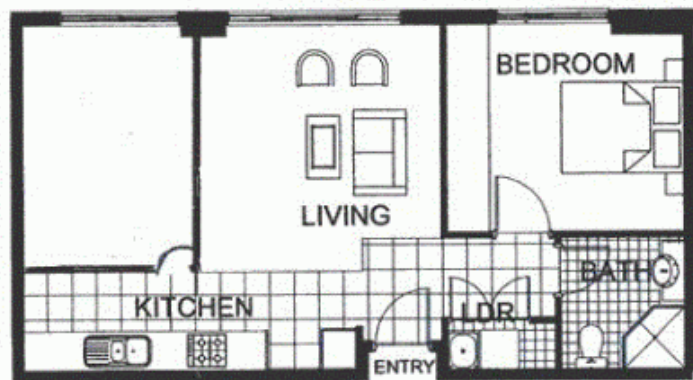
#### Agent

**Sarah Fowell**

 0437 492 129

 rentals@morton.com.au

[morton.com.au](http://morton.com.au)



\*The information contained herein is intended as an introduction to the general content of the project and is subject to variation. Interested parties should rely on their own enquiries and the contract for sale. The developer reserves the right to vary from these descriptions as it deems necessary or as any relevant authority may require.\*



1 BEDROOM

APARTMENT 730(Exist No.702)

INTERNAL AREA 52sqm

TOTAL AREA 52sqm



LEVEL 7

POSITANO

