



# morton.

**WENTWORTH POINT** 2 The Piazza

 2  2  1

This two bedroom apartment 85 sqm has outlook over The Piazza and internal landscaped courtyard from front and rear balconies, providing natural light and cross ventilation, modern kitchen with stone benchtops and s/steel appliances, bedrooms separate from living area, main bedroom with ensuite, security video intercom, basement parking serviced by lift.

- \* Open plan living and dining
- \* Outlook over The Piazza
- \* Two bedrooms with built ins
- \* Two bathrooms, ensuite to main bedroom
- \* Security building with security intercom
- \* Pulse Lifestyle facilities on site, gym, heated pool and tennis courts

Strata Levies \$1211 p/q  
Council Rates \$ 207 p/q approx  
Water Rates \$ 140 p/q approx

### View

As advertised or by appointment

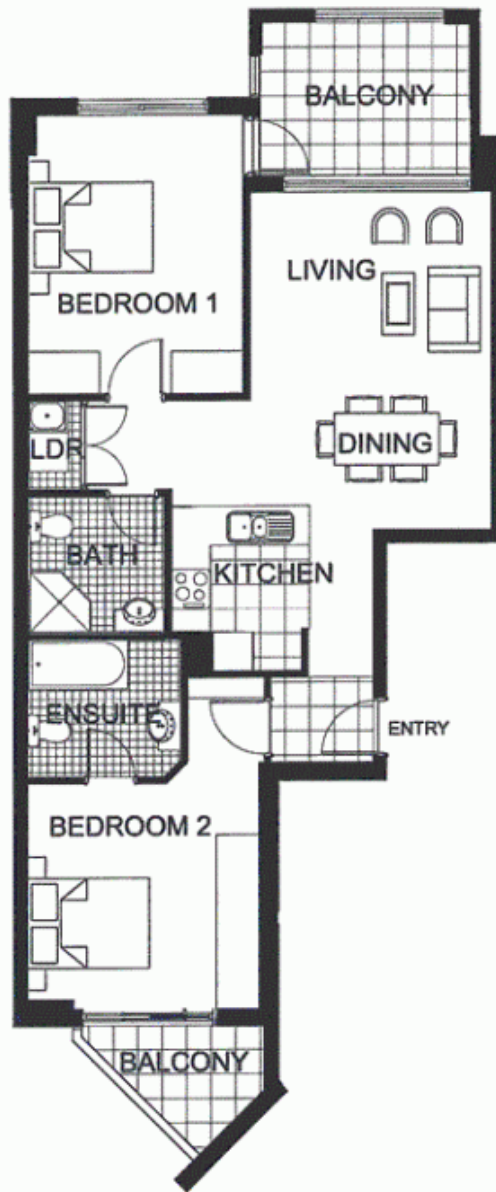
### Agent

**Sarah Fowell**

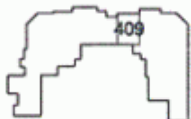
 0437 492 129

 rentals@morton.com.au

[morton.com.au](http://morton.com.au)



\*The information contained herein is intended as an introduction to the general content of the project and is subject to variation. Interested parties should rely on their own enquiries and the contract for sale. The developer reserves the right to vary from these descriptions as it deems necessary or as any relevant authority may require.\*



**THE WATERFRONT**  
AT HOMEBUSH BAY

**2 BEDROOM**

**APARTMENT 409**

**TYPE Q**

INTERNAL AREA 73sqm

OUTDOOR AREA 12sqm

TOTAL AREA 85sqm

LEVEL 4

**MYKONOS**