



**morton.**

**WENTWORTH POINT** 25 Bennelong Parkway

 1  1  1

Rare one bedroom apartment 72 sqm with permanent water views through Homebush Bay, north to Parramatta River and to Rhodes.

- \* Full length balcony with access from bedroom and living room
- \* Quality inclusions, stone benchtops, stainless steel appliances
- \* Spotless condition - never rented
- \* Easy stroll to waters edge and local restaurants, coffee shops, gymnasium, heated lap pool, tennis courts etc
- \* Building has its own outdoor pool exclusive to residents
- \* Secure basement parking

**View**

As advertised or by appointment

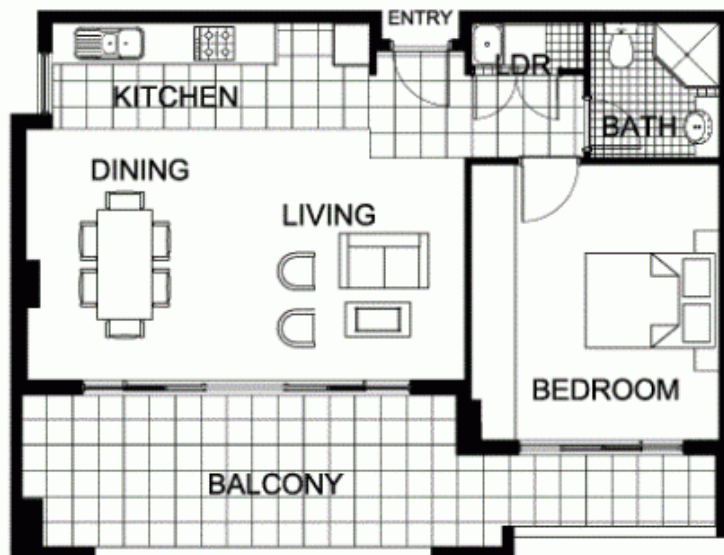
**Agent**

**Sarah Fowell**

 0437 492 129

 rentals@morton.com.au

**morton.com.au**



"The information contained herein is intended as an introduction to the general content of the project and is subject to variation. Interested parties should rely on their own enquiries and the contract for sale. The developer reserves the right to vary from these descriptions as it deems necessary or as any relevant authority may require."



**THE WATERFRONT**  
AT HOMEBUSH BAY

**1 BEDROOM**

**APARTMENT 422(Exist No.4.501)**

INTERNAL AREA 55 sqm

OUTDOOR AREA 17 sqm

TOTAL AREA 72 sqm



LEVEL 4.5

**POSITANO**