



morton.

WENTWORTH POINT 443/25 Bennelong Parkw

1 1 1

Space efficient one bedroom apartment 66 sqm with water glimpses and sunny north east aspect, situated on level 4 of the Positano building at The Waterfront in Wentworth Point. Enjoy the community spirit and peaceful landscaped surrounds of this wonderful waterfront estate located adjacent to Sydney Olympic Park. Light and bright with full width balcony accessible from both living room and bedroom.

Features:

- Combined lounge and dining area
- Open plan kitchen with s/steel appliances, gas cooking, dishwasher and microwave
- Separate bathroom
- Internal laundry with dryer
- Spacious balcony 14sqm with water glimpses
- Audio/visual intercom
- Secure undercover parking with lift access
- Separate swimming pool for Positano residents
- Access to Pulse Club resort style pool facilities plus heated lap pool, professional gym, and tennis courts.
- Live the lifestyle on The Waterfront or invest wisely, easily

View

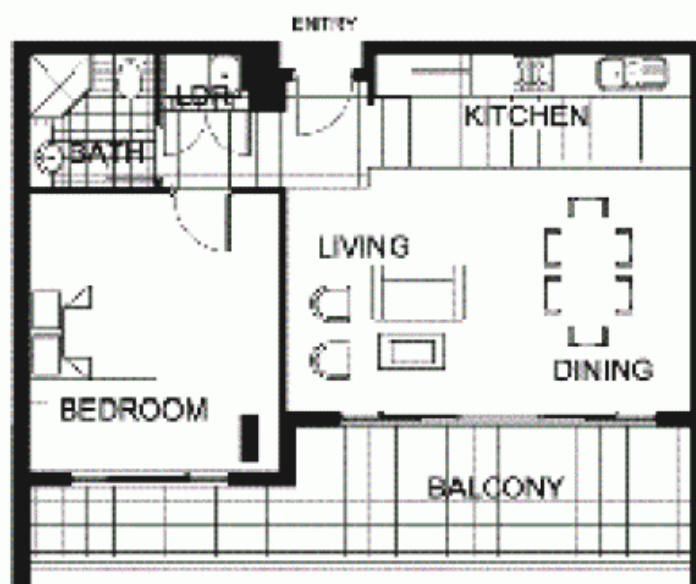
As advertised or by appointment

Agent

Sarah Fowell

0437 492 129
rentals@morton.com.au

morton.com.au



*This floor plan and dimensions are for information only and do not constitute an offer. The general location of the apartment is subject to availability. Information is provided for informational purposes only and does not constitute an offer. The developer reserves the right to change the floor plan and dimensions without notice. All dimensions are approximate and subject to change.



THE WATERFRONT
AT HOMERUSH BAY

1 BEDROOM

APARTMENT 443(Exist No.4.505)

INTERNAL AREA 62 sqm

OUTDOOR AREA 14 sqm

TOTAL AREA 88 sqm



LEVEL 15

POSITANO