



# morton.

**WENTWORTH POINT** 1 The Piazza

 2  2  1

Two bedroom, two bathroom apartment on level four with SE / NW aspect, open plan living and dining area with view to Piazza and Sydney Olympic Park, good sized kitchen with stone benchtops and stainless steel appliances, ensuite to main bedroom, basement car parking with lift access, audio/visual intercom, walk to coffee shops, restaurants and promenade. Opportunity to join Pulse Club with professional gym, indoor heated pool, steam room and tennis courts.

Huge potential for First Home Buyer or Investor !

Strata Levies \$1344 p/q  
Council Rates \$205 p/q approx  
Water Rates \$140 p/q approx

### View

As advertised or by appointment

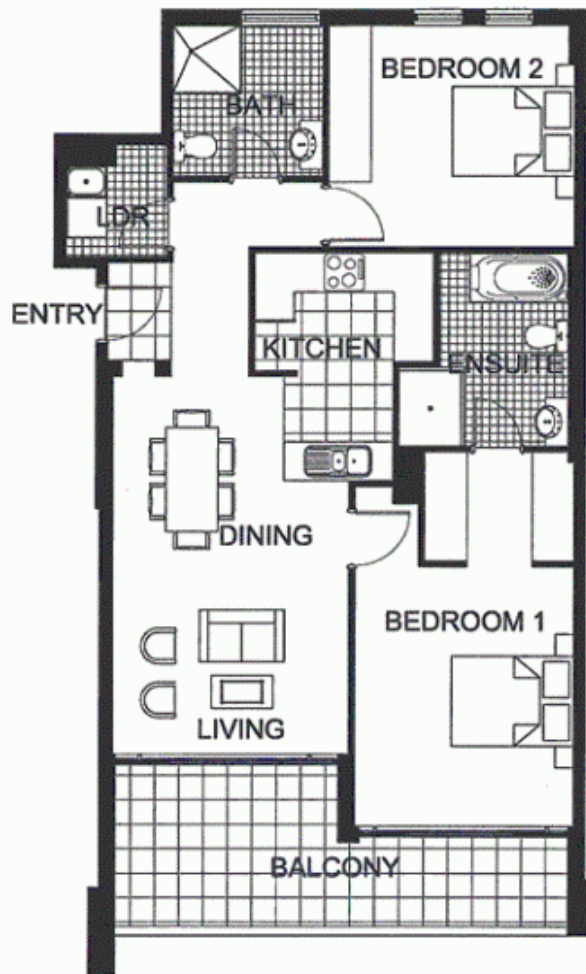
### Agent

**Sarah Fowell**

 0437 492 129

 [rentals@morton.com.au](mailto:rentals@morton.com.au)

[morton.com.au](http://morton.com.au)



"The information contained herein is intended as an introduction to the general content of the project and is subject to variation. Interested parties should rely on their own enquiries and the contract for sale. The developer reserves the right to vary from these descriptions as it deems necessary or as any relevant authority may require."



2 BEDROOM

APARTMENT 410

TYPE 2A

INTERNAL AREA 83sqm

OUTDOOR AREA 13sqm

TOTAL AREA 96sqm



LEVEL 4

CAPRI