

morton.

Wentworth Point 224/3 Stromboli Strait

🛏 2 🚿 2 🚗 1

Set in the award winning Napoli building, this generous and well balanced 108sqm two bedroom unit represents the best of apartment living. The sizable living room with adjoining terrace flows directly to a fully fitted kitchen and breakfast balcony. This split bedroom floor plan with the privacy that it provides, is ideal for shared living and sure to prove popular with owner occupiers and investors alike.

- Fitted kitchen with stone bench tops gas cooking and dishwasher
- Large master bed with en-suite
- Sizable second bedroom with built-ins
- Second bathroom with bath tub
- Internal laundry with dryer
- Audio/visual security intercom
- Secure undercover parking space
- Short walk to bus stop and ferry services
- Close to The Piazza and Newington Shopping Village with an array of cafes and restaurants at your disposal

View

As advertised or by appointment

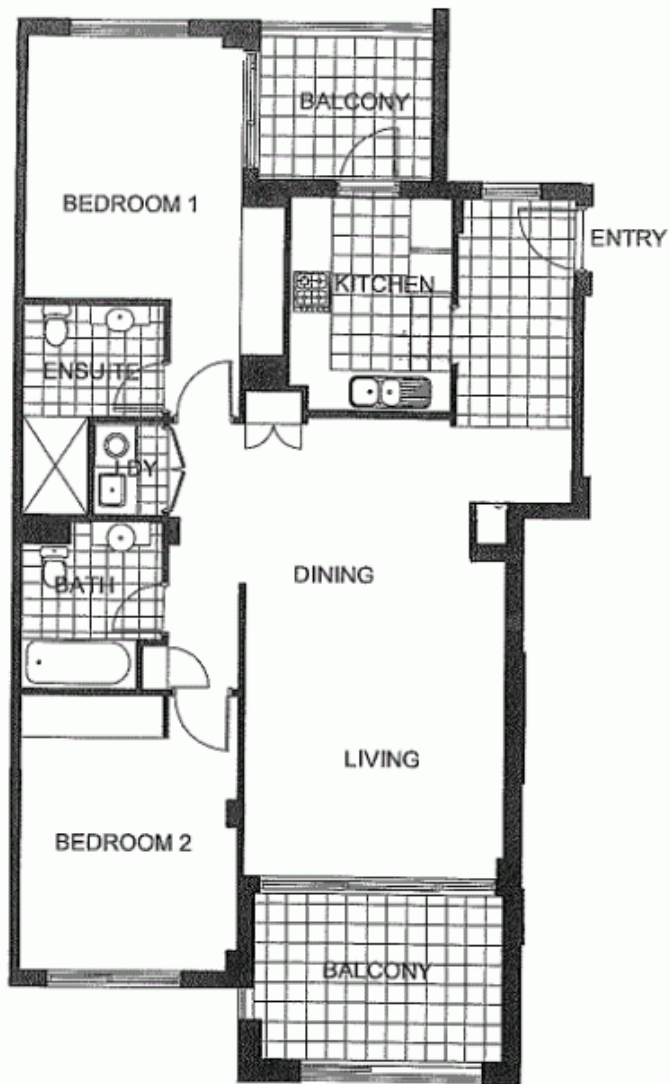
Agent

Sarah Fowell

📞 0437 492 129

✉ rentals@morton.com.au

morton.com.au



0 1 2 3 4 5

The information contained herein is intended as an introduction to the general content of the project and is subject to validation. Interested parties should rely on their own enquiries and the contract for sale. The developer reserves the right to vary from these descriptions as it deems necessary or as any relevant authority may require.



LEVEL 2



THE WATERFRONT
AT HOME BUSH BAY

2 BEDROOM

APARTMENT 224

TYPE B2

INTERNAL AREA 94sqm

OUTDOOR AREA 15 sqm

TOTAL AREA 109 sqm

NAPOLI