



morton.

WENTWORTH POINT 3 Baywater Drive

 1  1  1

Review this opportunity 68 sqm one bedroom apartment with internal and external storage. open plan living and dining, great kitchen with dishwasher and microwave, superb building with its own gym and outdoor pool, access to The Pulse Club with indoor heated lap pool, professional gym, sauna and tennis courts. Cafes and restaurants, day spa, hairdresser and medical centre on the estate.

- * Efficient floor plan
- * Corner position
- * Light and bright
- * Air conditioning in living area
- * Lift access to secure basement parking
- * Basement storage cage
- * Building has its own gym and outdoor pool
- * Adjacent to Sydney Olympic Park

Strata Levies \$771 p/q
Council Rates \$219 p/q
Water Rates \$156 p/q

morton.com.au

View

As advertised or by appointment

Agent

Sarah Fowell

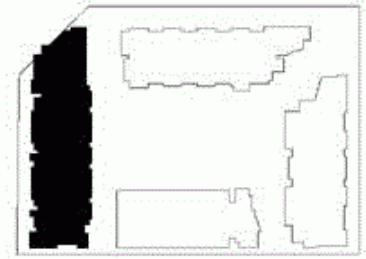
 0437 492 129

 rentals@morton.com.au

- ENTRY 1
- LIVING 2
- DINING 3
- KITCHEN 4
- BEDROOM 5
- BATHROOM 6
- LAUNDRY 7
- LINEN 8
- TERRACE 9
- CLOTHES DRYING 10



LEVEL 06



PALERMO

UNIT: **661**

TYPE: 1 Bedroom

UNIT AREA: 62.0 sqm

OUTDOOR AREA: 6.0 sqm



Disclaimer: All layouts are indicative only, and subject to change.

ALLEN JACK+COTTIER

