



morton.

WENTWORTH POINT 3 Baywater Drive

 1  1  1

A classic loft style one bedroom apartment with bedroom on mezzanine level. Living room opens via bifold doors to external gated terrace with street entrance - secure and private. Building has its own gymnasium and outdoor pool. Access to "Pulse Club" professional gym, heated pool, tennis courts etc.

- * Large 22 sqm terrace
- * Secure and private
- * Electric windows and shutters
- * S/steel appliances & stone benchtops
- * Secure basement parking
- * Outdoor pool and gym within the building

View

As advertised or by appointment

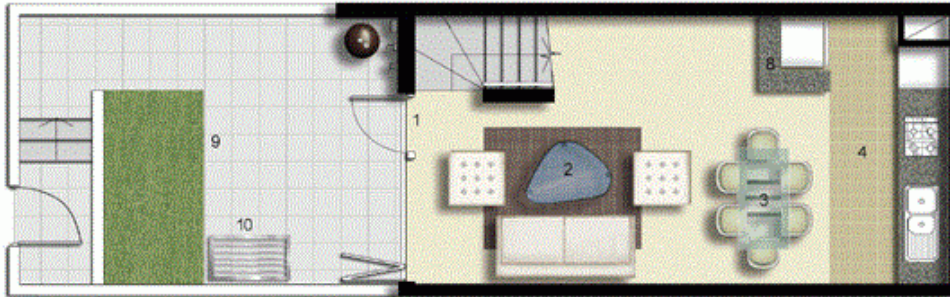
Agent

Sarah Fowell

 0437 492 129

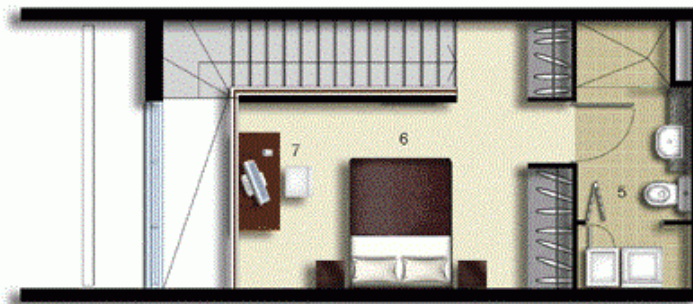
 rentals@morton.com.au

morton.com.au

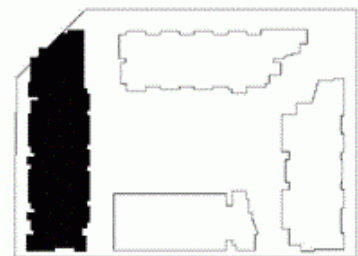


- ENTRY 1
- LIVING 2
- DINING 3
- KITCHEN 4
- ENSUITE/LAUNDRY 5
- BEDROOM 6
- STUDY 7
- STORAGE 8
- TERRACE 9
- CLOTHES DRYING 10

LEVEL 01



LEVEL 02



PALERMO

UNIT: 154

TYPE: 1 Bedroom

UNIT AREA: 60.0 sqm

OUTDOOR AREA: 22.0 sqm



Disclaimer: All layouts are indicative only, and subject to change.