



morton.

WENTWORTH POINT 3 Stromboli Strait

2 2 2

Two bedroom apartment in low rise courtyard style building, front and rear balconies, natural light on two elevations, excellent ventilation and flow through river breezes, morning and afternoon sun. First floor location, walk up one set of stairs, private and quiet - shared by only one other apartment. Entry via landscaped courtyard, basement car parking with lift access.

View

As advertised or by appointment

Agent

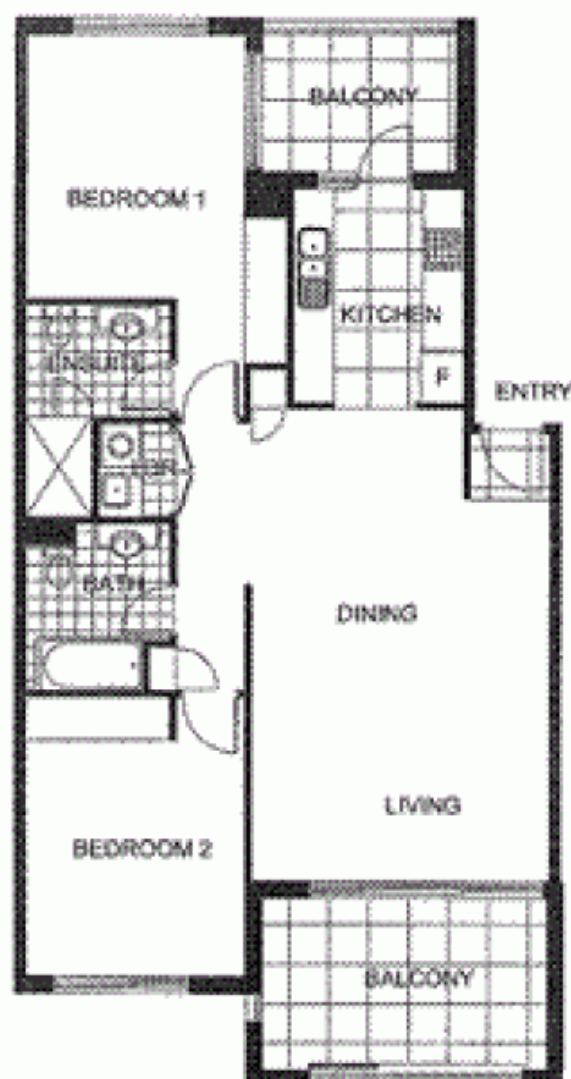
Sarah Fowell

0437 492 129

rentals@morton.com.au

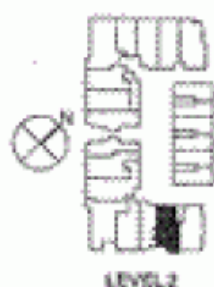
- * First Floor
- * Single level
- * Two bathrooms, main bedroom with ensuite
- * Balconies front and rear
- * BBQ near kitchen
- * Two car spaces in secure basement
- * Audio/ visual intercom
- * Access to Pulse Club with heated indoor pool
- * Professional gym, sauna and tennis courts

morton.com.au



0 1 2 3 4 5

"The information contained herein is intended as an introduction to the general concept of the project and is subject to variation. Prospective parties should rely on their own enquiries and the contract for sale. The Developer reserves the right to vary these details as it deems necessary to its own interest and without liability to anyone."



THE WATERFRONT
AT POMEROY BAY

2 BEDROOM

APARTMENT 218

TYPE C

INTERNAL AREA 89 sqm

OUTDOOR AREA 17 sqm

TOTAL AREA 106 sqm

NAPOLI