



morton.

WENTWORTH POINT 5 Stromboli Strait

 3  2  2

Central position located near the water opposite tennis courts, superb proportions, spacious secure and private. This rare family apartment has few competitors.

A rare combination with off street access, three bedroom accommodation and sunfilled, landscaped and tiled alfresco living spaces.

- * Ground floor - dual access
- * Open plan living spaces
- * Galley style kitchen
- * Wrap around terrace/garden 199 sqm
- * Abundant sun and natural light
- * Double lock up garage
- * Access to lagoon pool, tennis courts, gym, indoor heated lap pool
- * Cafes and restaurants, medical centre, pharmacy and fresh food market
- * Adjacent to Sydney Olympic Park precinct
- * Surrounded by Millennium Parkland, Bi Centennial park, cycling tracks and walkways

morton.com.au

View

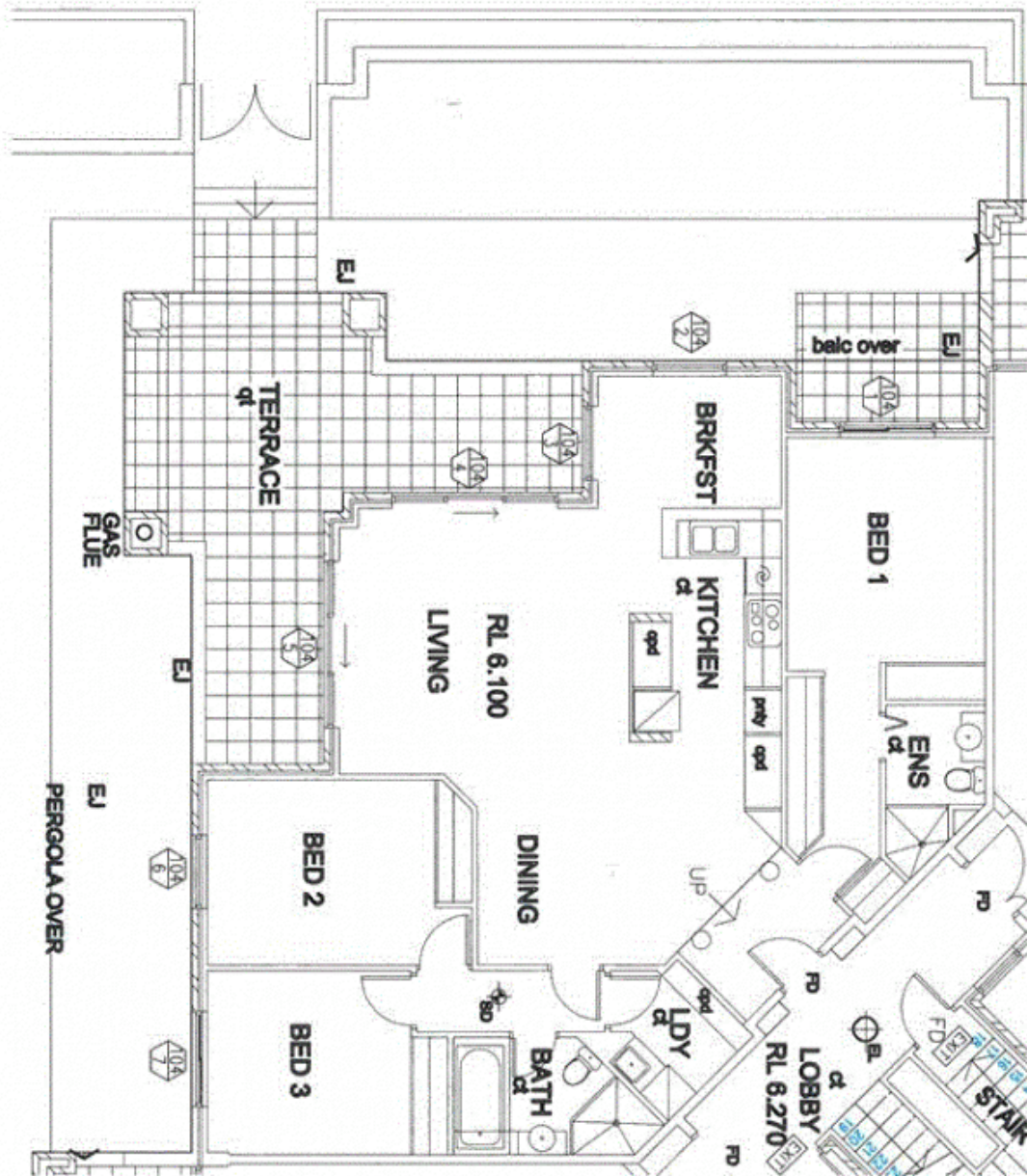
As advertised or by appointment

Agent

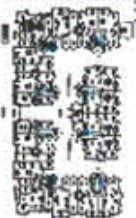
Sarah Fowell

 0437 492 129

 rentals@morton.com.au



"The information contained herein is intended as an introduction to the general content of the project and is subject to variation. Interested parties should rely on their own enquiries and the contract for sale. The developer reserves the right to vary from these descriptions as it deems necessary or as any relevant authority may require."



THE WATERFRONT
AT HOMEBUSH BAY

3 BEDROOM

APARTMENT 104

TYPE A

INTERNAL AREA 117 sqm

OUTDOOR AREA 199 sqm

TOTAL AREA 316sqm

CORFU