



morton.

Wentworth Point 101/19 Hill Road

 2  2  2

This well presented with house like proportions, sun drenched 2 bedroom apartment offers an overly generous floor plan with relaxed low maintenance making it the perfect family home. This sizable 140 sqm split level apartment features:

- * Tiled separate living room and dining room
- * Reverse cycle air conditioning in living quarter
- * Sun blessed north-west facing courtyard
- * Gourmet kitchen with stone bench tops and breakfast bar, stainless steel appliances and plenty cupboard space
- * King size main bedroom, with reverse cycle air conditioner, built in wardrobes, en-suite and access to private balcony
- * Second bedroom with built in wardrobe and access to private balcony
- * Modern and well-appointed master size main bathroom
- * Full size laundry room with dryer
- * Tandem car space plus double size storage cage.
- * Immediate access to the apartment from street level
- * Access to public transport at your front door
- * Pulse Lifestyle Club with access to indoor and outdoor pools,

View

As advertised or by appointment

Agent

Sarah Fowell

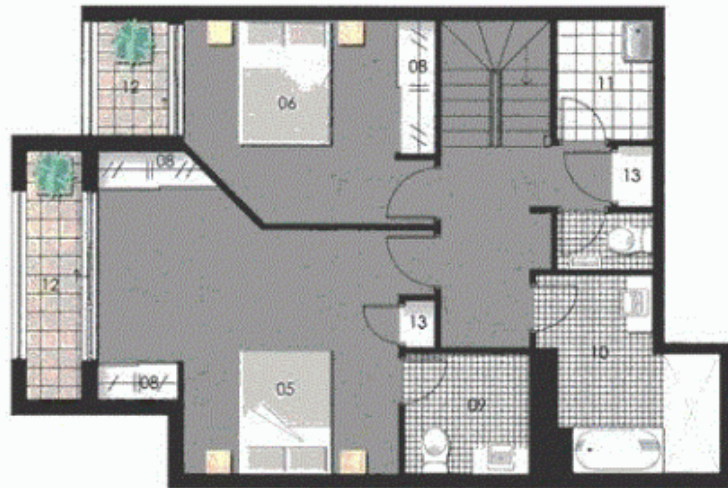
 0437 492 129

 rentals@morton.com.au

morton.com.au

SORRENTO

THE WATERFRONT
AT HOMEBUSH BAY



LEVEL 2



LEVEL 1

0 1 2 3 4 5

ENTRY	01	WARDROBE	08
LIVING	02	ENSUITE	09
DINING	03	BATHROOM	10
KITCHEN	04	LAUNDRY	11
BEDROOM 1	05	BALCONY	12
BEDROOM 2	06	STORAGE	13
BEDROOM 3	07	COURTYARD	14



Unit 101

Lot Number	11
Type	2 Bedroom
Unit Area	103 sqm
Courtyard	28 sqm
Balcony	9 sqm
Total	140 sqm

Disclaimer: All layouts are indicative only and subject to change.

05.05.06 : Revision D

Robertson+Marks
ARCHITECTS

PAYCE