



morton.

WENTWORTH POINT 25 Bennelong Parkway

 2  2  2

Spacious living 129 sqm, faultless presentation, two bedrooms, study, storage, two car spaces.

- * The best North East aspect - sun all day
- * Flow through River breezes each afternoon
- * Airconditioned living area
- * 2 bedrooms, 2 bathrooms; main with ensuite
- * Study with connections to power internet etc
- * Internal storage room and laundry storage
- * Huge Alfresco balcony - an outside room
- * Plus rear balcony
- * Impressive Water & Sydney Olympic Park views
- * On floor waste chute and recycling depot
- * Seperate outdoor pool for building residents
- * Indoor heated lap pool, gym, tennis courts onsite

Strate Levies \$1621 pq approx

Council Rates \$ 190 pq approx

Water Rates \$ 135 pq approx

View

As advertised or by appointment

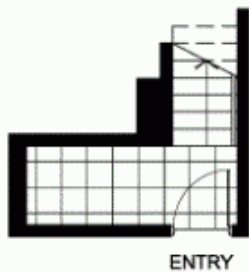
Agent

Sarah Fowell

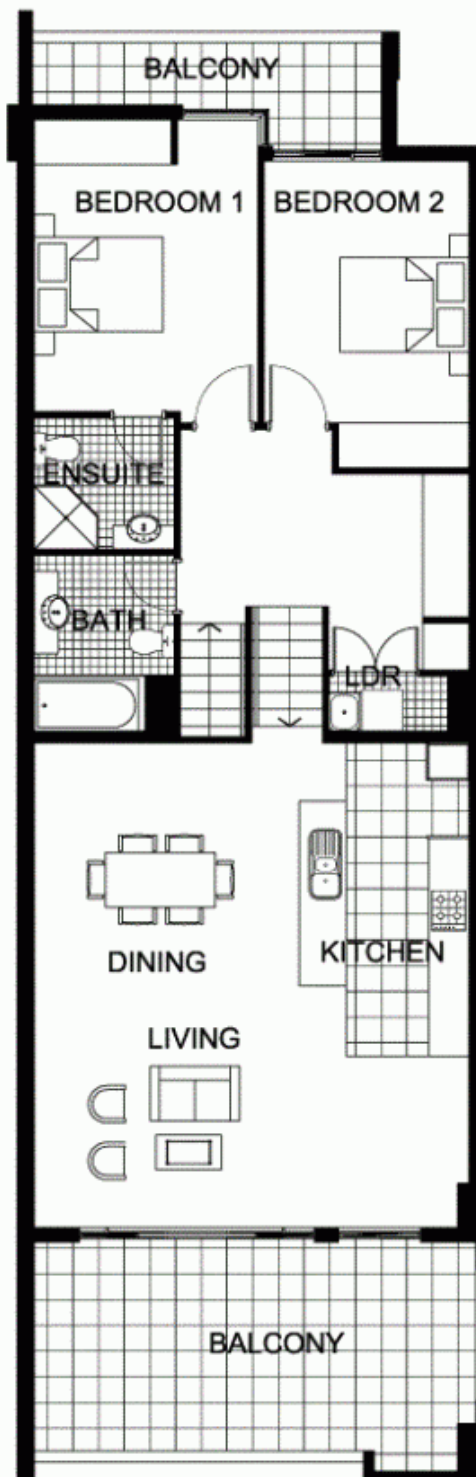
 0437 492 129

 rentals@morton.com.au

morton.com.au



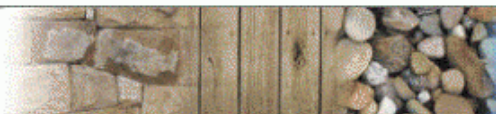
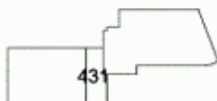
LEVEL 4.5



LEVEL 5



"The information contained herein is intended as an introduction to the general content of the project and is subject to variation. Interested parties should rely on their own enquiries and the contract for sale. The developer reserves the right to vary from these descriptions as it deems necessary or as any relevant authority may require."



THE WATERFRONT
AT HOMEBUSH BAY

2 BEDROOM

APARTMENT 431(Exist No.505)

INTERNAL AREA 105sqm

OUTDOOR AREA 24sqm

TOTAL AREA 129sqm



LEVEL 5

POSITANO