



morton.

WENTWORTH POINT 25 Bennelong Parkway

 2  2  2

Spacious living 129sqm, faultless presentation, two bedrooms plus study, two car spaces in secure basement, the best north east aspect with sun all day and flow through river breezes.

- * Air conditioned living room
- * New carpet
- * Two bedrooms, two bathrooms
- * Study with connections to power internet etc
- * Internal storage and laundry storage
- * Huge alfresco balcony - an outside room
- * Rear balcony
- * On floor waste chute and recycling depot
- * Seperate outdoor pool for building residents
- * Opportunity of join Pulse Club with indoor pool, gym. tennis courts and resort style outdoor pool
- * Adjacent to Sydney Olympic Park precinct

View

As advertised or by appointment

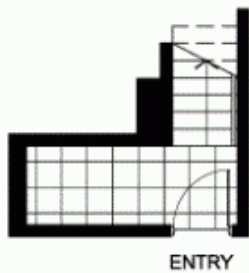
Agent

Sarah Fowell

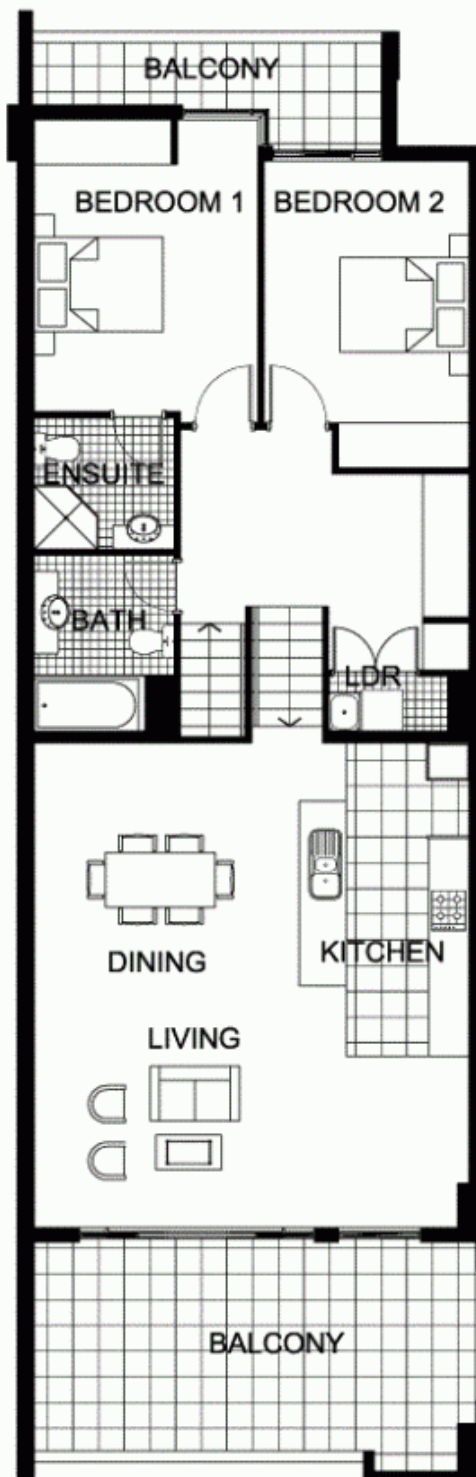
 0437 492 129

 rentals@morton.com.au

morton.com.au



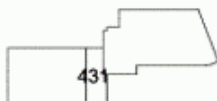
LEVEL 4.5



LEVEL 5



"The information contained herein is intended as an introduction to the general content of the project and is subject to variation. Interested parties should rely on their own enquiries and the contract for sale. The developer reserves the right to vary from these descriptions as it deems necessary or as any relevant authority may require."



2 BEDROOM

APARTMENT 431(Exist No.505)

INTERNAL AREA 105sqm

OUTDOOR AREA 24sqm

TOTAL AREA 129sqm



LEVEL 5

POSITANO

THE WATERFRONT
AT HOMEBUSH BAY