



morton.

WENTWORTH POINT 1 The Piazza

2 2 1

This excellent two bedroom apartment will suit an investor or first home buyer, NW/SE outlook to the Piazza with water glimpses. Two balconies, single car space in secure basement.

- Second balcony overlooks landscaped courtyard
- Access to Pulse Club with indoor heated pool, gymnasium and tennis courts
- Main bedroom with en-suite
- Surrounded by urban parkland and adjacent to Sydney Olympic Park precinct
- On site Party Room available
- Separate laundry with dryer
- Video access, secure basement car space

Residents at The Waterfront have the opportunity to become a member of the Pulse Club giving you access to the local gym, in-door lap pool, outdoor Oasis pool, steam room and two tennis courts. All apartments at the Waterfront are Foxtel-ready and Homelinx-enabled for all internet and

View

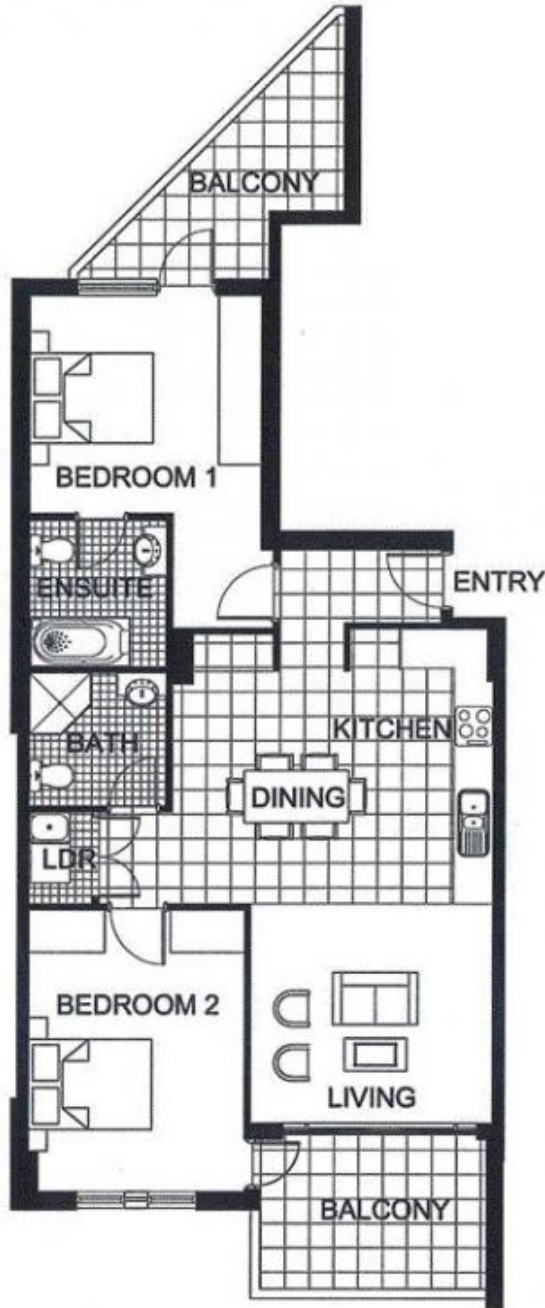
As advertised or by appointment

Agent

Sarah Fowell

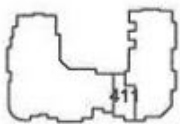
- 0437 492 129
- rentals@morton.com.au

morton.com.au



0 1 2 3 4 5

The information contained herein is intended as an introduction to the general content of the project and is subject to variation. Interested parties should rely on their own enquiries and the contract for sale. The developer reserves the right to vary from these descriptions as it deems necessary or as any relevant authority may require.



LEVEL 4



2 BEDROOM

APARTMENT 411

TYPE 2B

INTERNAL AREA 78sqm

OUTDOOR AREA 15sqm

TOTAL AREA 93sqm

CAPRI