



morton.

WENTWORTH POINT 4 The Piazza

🛏 2 🚿 2 🚗 1

Three levels only overlooking landscaped Piazza, solid double brick construction, basement lockup garaging, attractive street views and internal courtyard outlook.

Featuring:

- * Polished floor boards
- * Airconditioning x 2
- * Quality fixtures and fittings, s/steel appliances
- * Spacious efficient floorplan 118 m²
- * Two covered 'Alfresco' balconies
- * Single lockup garage in secure basement
- * All facilities on site including indoor heated lap pool, tennis courts, state of the art gym, kayak club, cycle hire, day spa, cafes, medical centre.
- * Adjacent to Sydney Olympic Park

Strata Levies \$936 p/q approx
Council Rates \$165 p/q approx
Water Rates \$122 p/q approx

View

As advertised or by appointment

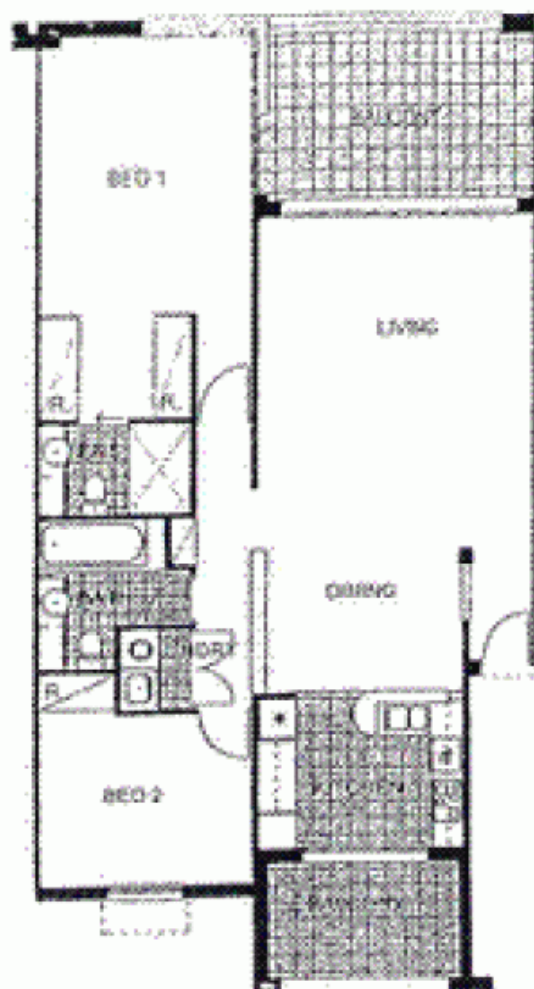
Agent

Sarah Fowell

📞 0437 492 129

✉ rentals@morton.com.au

morton.com.au



"The information contained herein is intended as a guide only and is not intended to be a contract. The developer reserves the right to change the design of the project without notice and is not responsible for any errors or omissions. The developer reserves the right to change the design of the project without notice and is not responsible for any errors or omissions."



2 BEDROOM APARTMENT TYPE-
303 SANTORINI

