



morton.

WENTWORTH POINT 304/19 Hill Road

 2  2  1

Two level spacious corner apartment, 137 sqm in quality contemporary building. Two bedrooms, two bathrooms, separate WC, study alcove with balcony, natural light, ventilation on three elevations, morning and afternoon sun, living area airconditioned, video intercom, secure basement parking plus storage cage.

Many lifestyle benefits on site, indoor heated lap pool, gymnasium, tennis courts, cafes, sport and recreation facilities nearby.

Strata Levies \$807 pq (approx)
Council Rates \$190 pq (approx)
Water Rates \$135 pq (approx)

View

As advertised or by appointment

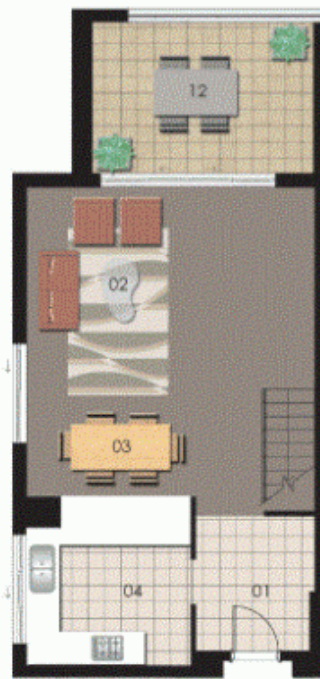
Agent

Sarah Fowell

 0437 492 129

 rentals@morton.com.au

morton.com.au



LEVEL 3



LEVEL 4

ENTRY	01	WARDROBE	08
LIVING	02	ENSUITE	09
DINING	03	BATHROOM	10
KITCHEN	04	LAUNDRY	11
BEDROOM 1	05	BALCONY	12
BEDROOM 2	06	STORAGE	13
BEDROOM 3	07		



Unit 304

Lot Number	11
Type	2 Bedroom - corner
Unit Area	109 sqm
Balcony	28 sqm
Total	137 sqm