



morton.

WENTWORTH POINT 730/25 Bennelong Parkw

 1  1  1

- * 7TH LEVEL VIEWS TO SYDNEY OLYMPIC STADIUM
- * SECURE BASEMENT PARKING
- * 52M2 INTERNAL
- * INSPECT BY APPOINTMENT
- * CURRENTLY RENTED AT \$355 PER WEEK
- * ACCESS TO PULSE LIFESTYLE CLUB
- * INDOOR HEATED LAP POOL
- * STATE OF THE ART GYMNASIUM, TENNIS COURTS
- * DAY SPA, HAIRDRESSER, MEDICAL CENTRE
- * CAFES AND RESTAURANT ON SITE

- * Strata Levies \$860 pq approx
- * Council Rates \$190 pq approx
- * Water Rates \$135 pq approx

View

As advertised or by appointment

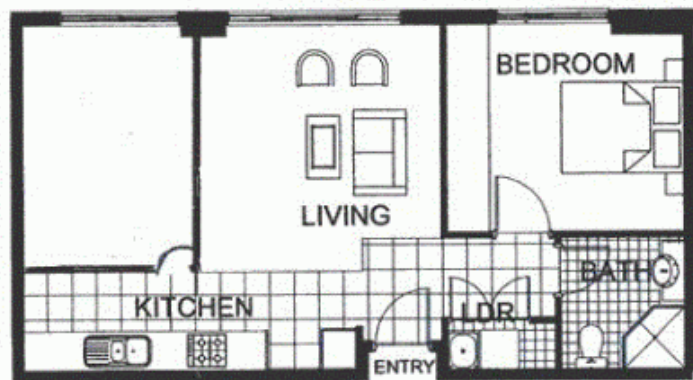
Agent

Sarah Fowell

 0437 492 129

 rentals@morton.com.au

morton.com.au



0 1 2 3 4 5

The information contained herein is intended as an introduction to the general content of the project and is subject to variation. Interested parties should rely on their own enquiries and the contract for sale. The developer reserves the right to vary from these descriptions as it deems necessary or as any relevant authority may require.



730

1 BEDROOM

APARTMENT 730(Exist No.702)

INTERNAL AREA 52sqm

TOTAL AREA 52sqm



LEVEL 7

POSITANO



THE WATERFRONT
AT HOMEBUSH BAY