



morton.

WENTWORTH POINT 3 Amalfi Drive

 2  2  1

First floor, 130 sqm, two apartments per floor, lift, air conditioning, light bright North East aspect, quality fittings and joinery, fabulous large entertainers Alfresco balcony. Want a 'Sea change' on Homebush Bay surrounded by 425 hectares of urban parkland and open spaces, call Graeme Lawson 0411 120 220.

- * Two spacious bedrooms and bathrooms
- * One car space in a secure basement
- * Video security intercom
- * Separate outdoor pool for residents
- * Use of Pulse Club resort facilities
- * Tennis courts, gymnasium, heated lap pool
- * Excellent investment or quiet private sanctuary
- * Tenanted / expired lease

Strata Levies : TBA

Council Rates: \$190 pq approx

Water Rates : \$130 pq approx

View

As advertised or by appointment

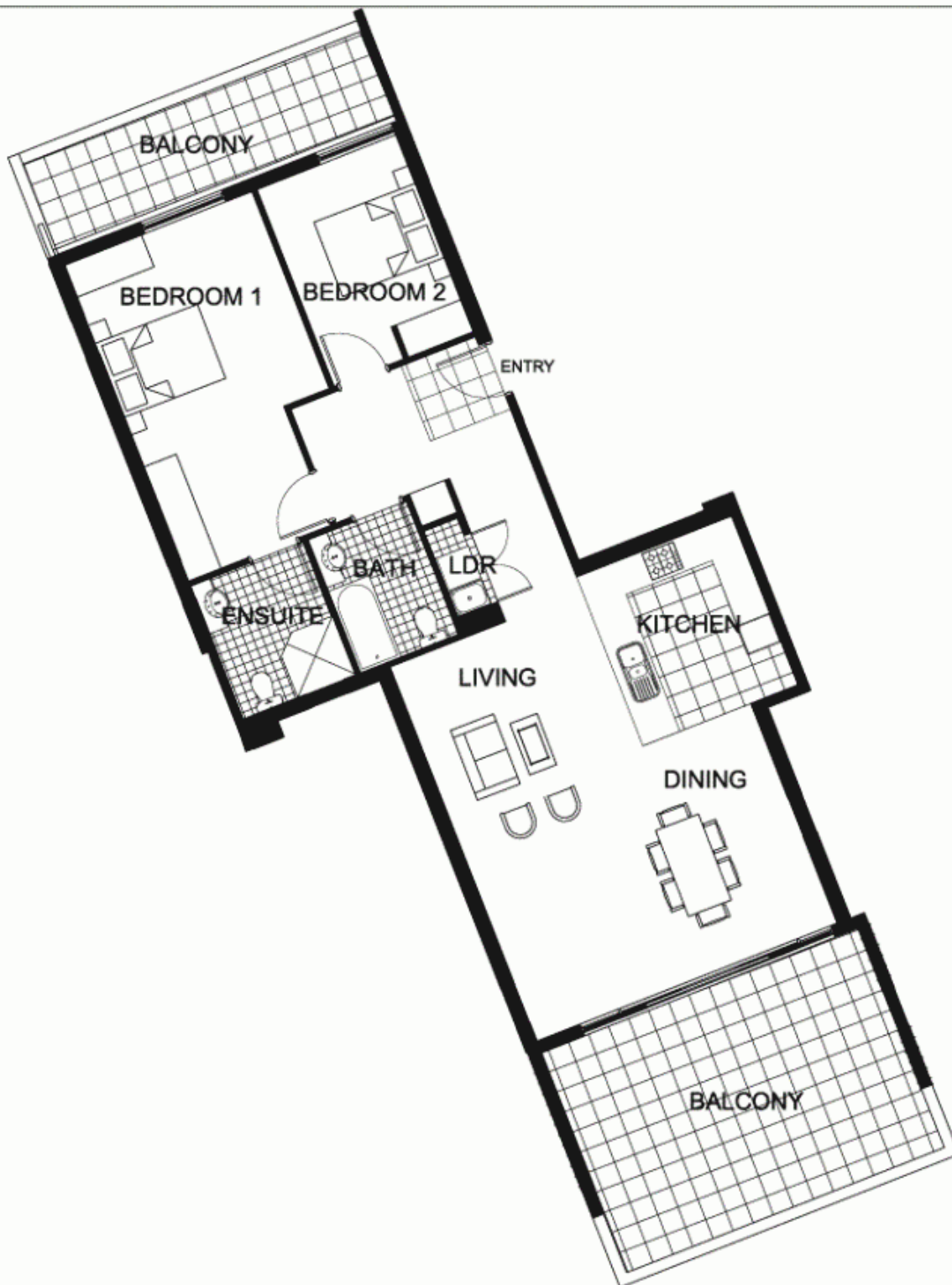
Agent

Sarah Fowell

 0437 492 129

 rentals@morton.com.au

morton.com.au



"The information contained herein is intended as an introduction to the general content of the project and is subject to variation. Interested parties should rely on their own enquiries and the contract for sale. The developer reserves the right to vary from these descriptions as it deems necessary or as any relevant authority may require."



2 BEDROOM

APARTMENT 111 (Original No.105)

TYPE G2

INTERNAL AREA 96 sqm

OUTDOOR AREA 34 sqm

TOTAL AREA 130 sqm

LEVEL 1

MONACO