



# morton.

**WENTWORTH POINT** 4 The Crescent

 2  2  2

Prestige apartment on levels 6/7 in premium building overlooking pool and Homebush Bay to Rhodes, includes high quality finishes, reverse cycle ducted air conditioning, stone bench tops, stainless steel appliances with microwave and dishwasher, two bedrooms; one on each level, two bathrooms, internal storage plus storage cage in basement. Outdoor pool for building residents only, access to the Pulse Club with heated indoor pool, gym, and tennis courts. Inspect this Lifestyle Estate in the geographic heart of metropolitan Sydney.

Strata Levies \$1430 p/q  
Council Rates \$219 p/q approx  
Water Rates \$156 p/q approx

### View

As advertised or by appointment

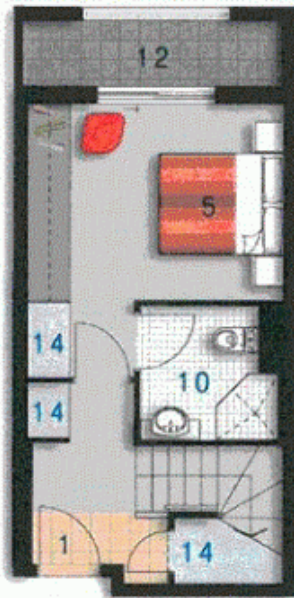
### Agent

**Sarah Fowell**

 0437 492 129

 [rentals@morton.com.au](mailto:rentals@morton.com.au)

[morton.com.au](http://morton.com.au)



LOWER



UPPER

ENTRY	01
LIVING	02
DINING	03
KITCHEN	04
BEDROOM 1	05
BEDROOM 2	06
BATHROOM	09
ENSUITE	10
LAUNDRY	11
BALCONY	12
STORAGE	14
CLOTHES DRYING	15



# valencia

Unit 678

Lot Number 62  
 Type 2 Bedroom  
 Unit Area 90m<sup>2</sup>  
 Balcony 16m<sup>2</sup>  
 Total 106m<sup>2</sup>  
 Scale 1:100



Disclaimer: All Layouts are indicative only, and subject to change.

0 2.5 5M

