



morton.

WENTWORTH POINT 25 Bennelong Road

 2  2  1

Spacious apartment, separate bedroom level, balcony and natural light front and rear. Open plan kitchen flows to dining and living area and external north facing balcony overlooking outdoor pool. Two bathrooms; ensuite to main bedroom. Access to Pulse Club with heated pool, gymnasium, tennis courts and steam room. Restaurants, coffee shop, deli, bottle shop, doctor, dentist, hair salon and day spa on site. Be part of a lifestyle estate on the water at Wentworth Point, the geographic heart of Sydney.

Strata Levies \$1088 pq approx
Council Rates \$190 pq approx
Water Rates \$135 pq approx

View

As advertised or by appointment

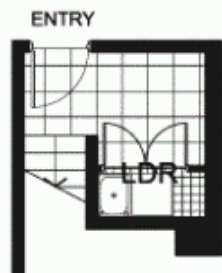
Agent

Sarah Fowell

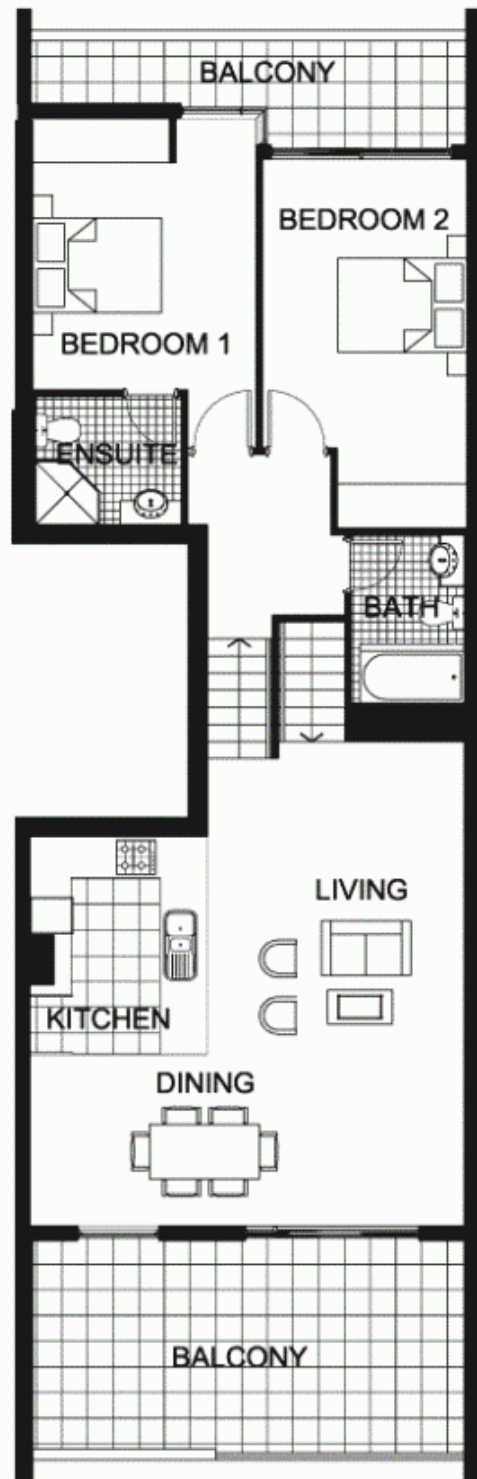
 0437 492 129

 rentals@morton.com.au

morton.com.au



LEVEL 2



LEVEL 3



"The information contained herein is intended as an introduction to the general content of the project and is subject to variation. Interested parties should rely on their own enquiries and the contract for sale. The developer reserves the right to vary from these descriptions as it deems necessary or as any relevant authority may require."



235

2 BEDROOM

APARTMENT 235(Exist No.309)

INTERNAL AREA 95 sqm

OUTDOOR AREA 26 sqm

TOTAL AREA 121 sqm



LEVEL 3

POSITANO

